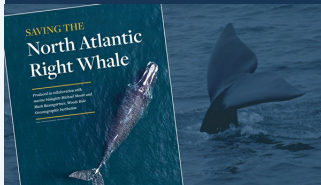




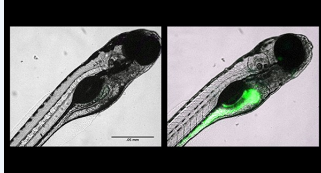
April 4, 2019  
IN THE NEWS | OCEAN TWILIGHT ZONE  
**Quartz: Ocean Twilight Zone Key to Life on Earth**

[GIVE](#) [EXPLORE](#) [SHOP](#)



REPORT | MARINE MAMMALS  
**Saving the North Atlantic Right Whale**  
Download our new free report

IN THE NEWS | SEA LEVEL RISE  
**Are Islands Disappearing?**  
Yes, but it's more complicated than that



FEATURE | MICROPLASTICS  
**Particles on the Move**  
Tracking the spread of nanoplastics inside fish

PROFILE | RESEARCH  
**Judith McDowell, Environmental Scientist**  
At the forefront of transformation



**Featured Image:** A plucky Adélie penguin jumps across a trickling meltwater stream. Researchers are hoping to understand how climate change has impacted the nesting and hunting behavior of this key species. Image by Chris Linder on Ross Island.

JOIN THE CONVERSATION #WHOI



Copyright ©2019 Woods Hole Oceanographic Institution. All rights reserved.  
266 Woods Hole Road, Woods Hole, MA 02543-1050 U.S.A.  
General Information: [information@whoi.edu](mailto:information@whoi.edu) or (508) 548-1400  
[Privacy Policy](#)

[View in a browser](#) | [Unsubscribe](#)

Share with a friend

