



APRIL 1, 2021

### Fukushima & the Ocean: A decade of disaster response

Researchers look back at how the sea was impacted by radioactive fallout

GIVE

EXPLORE

SHOP

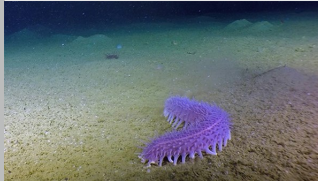


#### Data with a side of sass

How the so-called "data dollies" processed critical ocean data before the advent of personal computers

#### Meet the *Alvin* 6500 Team: Drew Bewley

As a kid he thought he'd never be able to dive in a submarine; now he flies one as a pilot

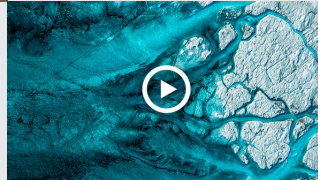


#### Image of the week: "A vibrant sea cucumber"

This purple creature was spotted at 3,000 feet deep along the bountiful seamounts of the Galápagos

#### Caution: This video contains epic science imagery

Watch our latest live event: "From Art to Science: The Anatomy of Glaciers"



### WHOI IN THE NEWS

WBUR

Cape Cod Researchers to Test New Camera That Could Protect Right Whales from Ships

HAKAI MAGAZINE

What Can We Learn From a Coral's Smell?

SCI TECH DAILY

Lessons From a Failed Experiment: When "Eradicated" Species Bounce Back With a Vengeance

ASU NEWS

Deep-sea exploration breakthrough to guide future space exploration missions

FALMOUTH ENTERPRISE

*Alvin* Pilot Is Guest Speaker For Supper Club Series

### Where are WHOI Ships Now?

START TRACKING →



GIVE NOW

SHOP WHOI

Follow us #WHOI



Copyright ©2020 Woods Hole Oceanographic Institution. All rights reserved.  
266 Woods Hole Road, Woods Hole, MA 02543-1050 U.S.A.  
General Information: [information@whoi.edu](mailto:information@whoi.edu) or (508) 548-1400  
[Privacy Policy](#)

[View in a browser](#) | [Unsubscribe](#)