

FEBRUARY 16, 2023

Explore the RMS *Titanic* shipwreck with us!

In commemoration of the 25th anniversary of the movie "Titanic," we've released rarely-seen footage from the 1986 wreck survey

GIVE

EXPLORE

SHOP

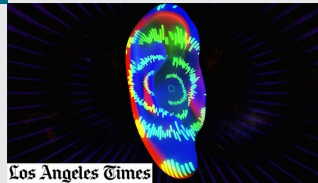


Is the Great Barrier Reef making a comeback?

The world's largest reef saw record growth after years of bleaching. So why aren't scientists celebrating?

The sounds of science

Scientists turn their data into sound to gain new insights into everything from DNA to galaxies



Ocean Encounters returns with *Hydrothermal Vents*

Join us to hear what vents can teach us about the origins of life on Earth, Wed., Feb. 22 at 7:30 p.m. ET

Image of the week: A deep-sea carnation

May your love be as deep and beautiful as this siphonophore, *Athorybia*



WHOI IN THE NEWS

THE BOSTON GLOBE

Rare video of 1986 dive in *Titanic* wreckage released

THE WASHINGTON POST

The other risk from the East Palestine disaster

SOUTH COAST TODAY

The deepest south: New Bedford students chat with researcher in Antarctica

Where are WHOI Ships Now?

START TRACKING →



GIVE NOW

SHOP WHOI

Follow us #WHOI

