

Your latest news on the ocean and ocean research. Having trouble seeing this? [View in your browser.](#)

Woods Hole Oceanographic Institution BENEATH *the* SURFACE

June 2017

☰ FEATURES



NASA Names WHOI Engineer to Astronaut Program

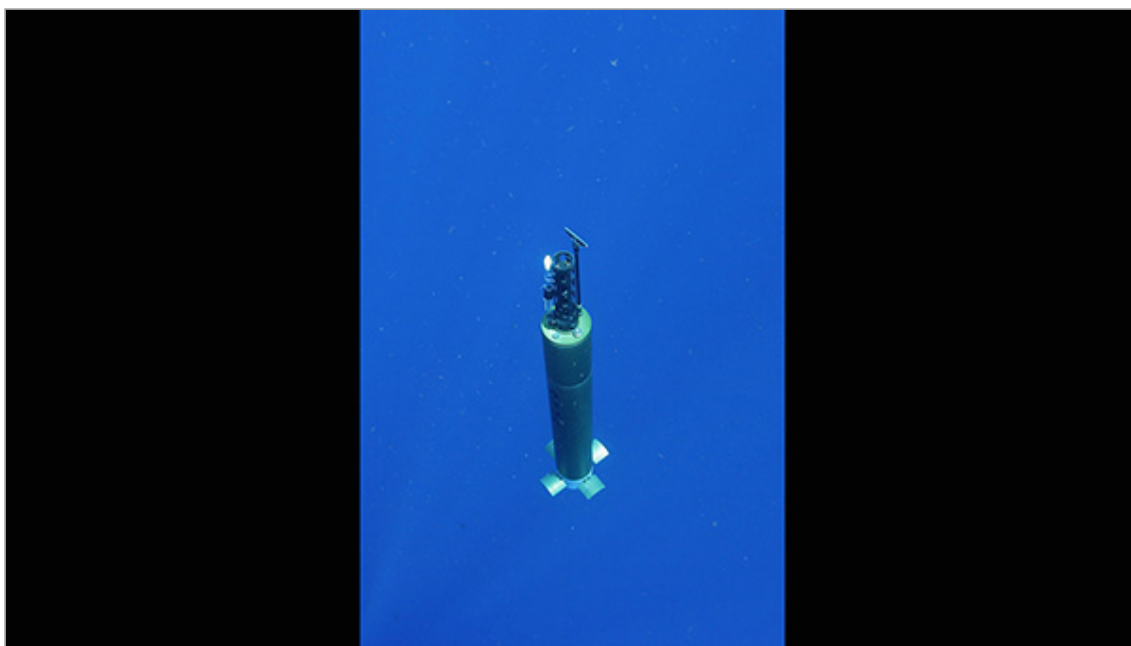


New Homes Won't Help Emperor Penguins Cope with Climate Change



VIDEO: WHOI and WHOI Advisor James Cameron Participate in UN Ocean Conference

IMAGE OF THE MONTH



Eye on the Storm

[Hurricane](#) season in the North Atlantic started on [June 1](#), which means scientists are once again preparing for any opportunity to study large storms.

One of the key drivers of hurricanes over the ocean is heat pulled from surface waters, but information about how much energy is available is difficult to obtain because of the danger of working so near a storm. [ALAMO](#) (Air Launched Autonomous Micro Observer) floats are deployed from a “Hurricane Hunter” aircraft and designed to spend months gathering data in front of and behind a storm from the surface to a depth of 1,000 meters (3,300 feet). (Photo by Robert Todd, [Woods Hole Oceanographic Institution](#))

» [See more great images](#)

WHOI IN THE NEWS

» [How to keep tabs on Atlantic hurricanes](#)

The Economist

» [Searching for life at the bottom of the Arctic](#)

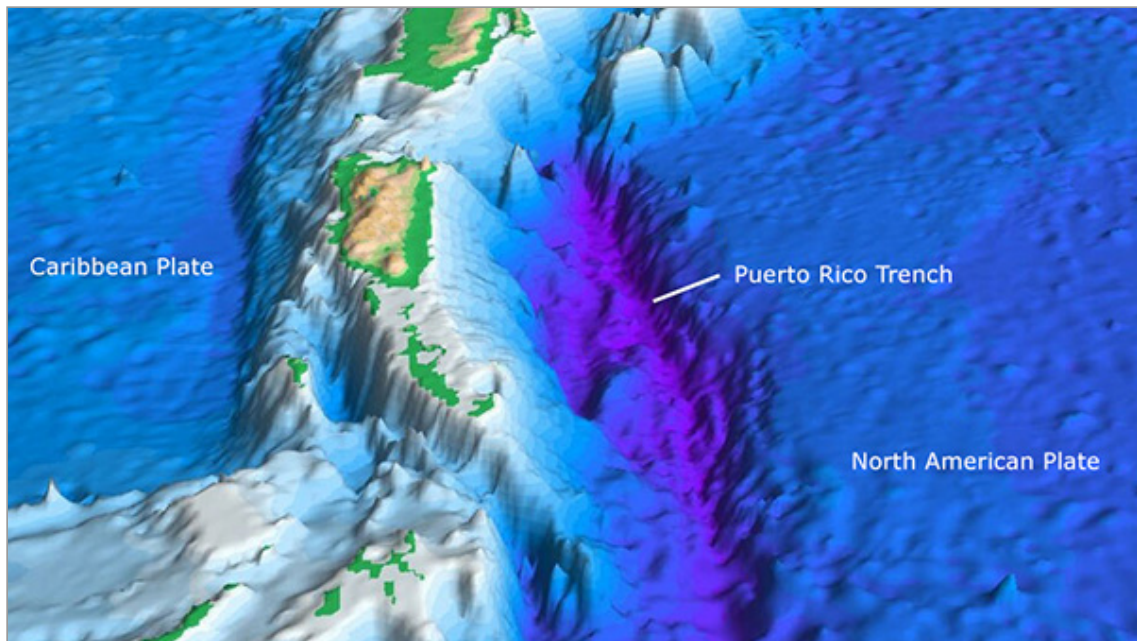
Scientific American

» [Woods Hole Oceanographic vessel Neil Armstrong - the scientists](#)

MSN

» [See more WHOI in the News](#)

#KNOW YOUR OCEAN



Oceanic [trenches](#), such as the Puerto Rico trench, are long, narrow topographic depressions of the seabed. The deepest parts of the ocean floor, they define one of the most important [natural boundaries](#) on the Earth's solid surface: the one between two lithospheric plates. (USGS)

» [See more ocean facts](#)

EVENTS & END NOTES

Events Calendar

View the schedule for seminars, forums, lectures and more.

Take a Summer Walking Tour of WHOI

Join knowledgeable WHOI volunteer guides on free walking tours through the WHOI dock area and other restricted village facilities. The tours take approximately one hour and fifteen minutes and provide excellent background on the research conducted at WHOI and on the history of the Institution.

Reservations are required. [MORE](#)

Visit the Ocean Science Exhibit Center

Don't miss an opportunity to see what WHOI does at our exhibit center and to buy great ocean-related gifts and souvenirs. Hours: Monday - Saturday, 10 am - 4:30 pm Our [online store](#) is always open. [MORE](#)

JOIN THE CONVERSATION



Join the growing WHOI community on social media and keep up with breaking news, surprising stories, and beautiful images.

[Not signed up yet?](#) Don't miss our monthly enewsletter to learn more about ocean science research at WHOI. [Sign up now and get a FREE ringtone.](#)

Where are WHOI ships now?

START TRACKING →



The Woods Hole Oceanographic Institution is dedicated to research and education to advance understanding of the ocean and its interaction with the Earth system, and to communicating this understanding for the benefit of society. [LEARN MORE](#)

[DONATE](#)

[FUNDRAISE](#)

[JOIN US](#)

Make a difference

with ProjectWHOI

Become a member

Copyright ©2017 Woods Hole Oceanographic Institution. All rights reserved.
266 Woods Hole Road, Woods Hole, MA 02543-1050 U.S.A.
General Information: information@whoi.edu or (508) 548-1400
[Privacy Policy](#)

[Unsubscribe](#)