

Your latest news on the ocean and ocean research. Having trouble seeing this? [View in your browser.](#)



February 2017

---

## ☰ FEATURES

---



### WATCH: Meet 25-foot, 25,000-pound Rocky the Whale Shark

Scientists from WHOI and Ocearch are using a satellite tag to track her movements



### Antarctic Bottom Waters Freshening at Unexpected Rate

Shift could disturb ocean circulation and hasten sea level rise, researchers say



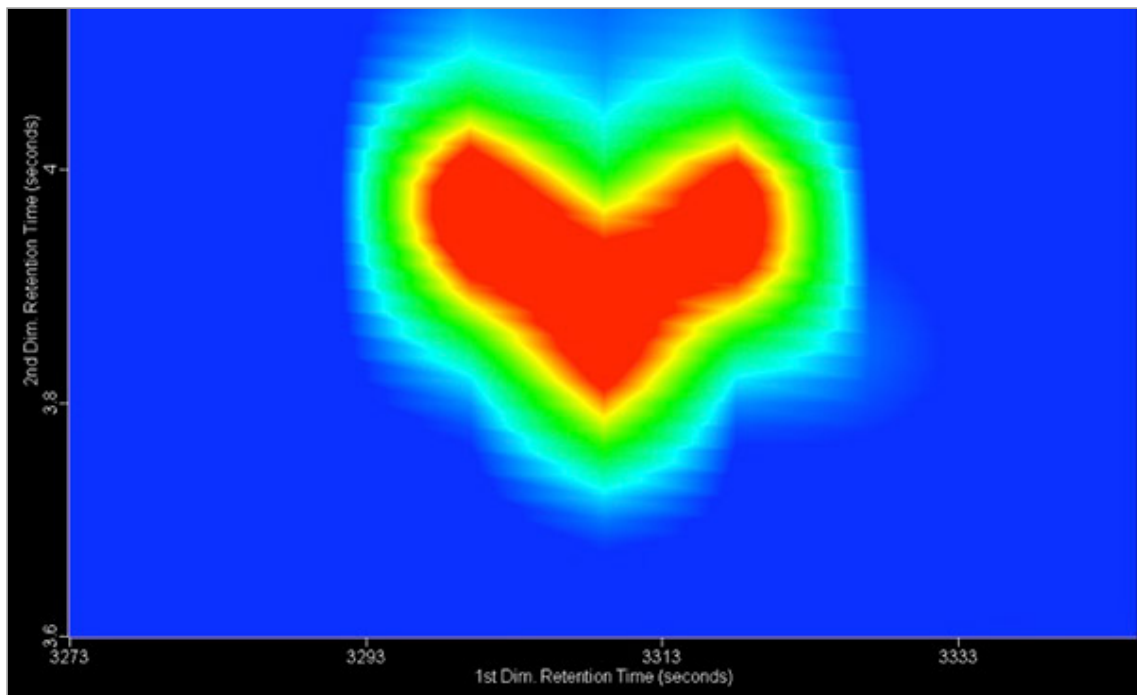
## LISTEN: Eavesdropping on Shrimp's Snap Chat

Tiny animals dominate the undersea soundscape

---

### IMAGE OF THE MONTH

---



## Valentine

This image of a single molecule of crude oil from the Gulf of Mexico appears to have an intrinsic sense of Valentine's Day romance. WHOI scientists Bob Nelson and Chris Reddy used state-of-the-art forms of analytical techniques such as gas chromatography and mass spectrometry to study how microbes eat oil after oil spills. The molecule itself is a close cousin to naphthalene, the primary ingredient in mothballs. What better way to say "I love you?" (Photo by Bob Nelson, Woods Hole Oceanographic Institution)

---

### WHOI IN THE NEWS

---

» [Corals could help predict the Asian monsoon](#)

WCAI - Living Lab

» [Global warming is changing how the ocean carries sound](#)

Hakai Magazine

» [Expedition probes ocean trench's deepest secrets](#)

Science Magazine

» [Ancient deep sea corals need protection from modern threats](#)

National Geographic - Ocean Views

---

## #KNOW YOUR OCEAN

---



**Stretching nearly 60,000 kilometers (37,000 miles) the mid-ocean ridge is the longest mountain range on Earth—and it is almost entirely under water.**

---

## EVENTS & END NOTES

---

### Need a Valentine Idea?

Why give a box of chocolates, when you can give a whole ocean? Give your Valentine (or yourself!) a [WHOI membership](#) and we'll send our bestselling SharkCam T-shirt or an art-quality poster of our first ketch, *Atlantis*, in addition to other great benefits. Plus, your gift will support ocean research at a time when it is needed most.

### Events Calendar

View the schedule for seminars, forums, lectures and more.

### See you in April

The Ocean Science Exhibit Center is closed for the season. See you on April 18. Meantime, our [online store](#) is always open.

### Peanut Butter Club

Fridays at noon in Redfield Auditorium. February 3 video presentation: "Tesla."

---

## JOIN THE CONVERSATION

---



Join the growing WHOI community on social media and keep up with breaking news, surprising stories, and beautiful images.

Not signed up yet? Don't miss our monthly enewsletter to learn more about ocean science research at WHOI. [Sign up now and get a FREE ringtone.](#)

Where are WHOI ships now?

[START TRACKING →](#)



The Woods Hole Oceanographic Institution is dedicated to research and education to advance understanding of the ocean and its interaction with the Earth system, and to communicating this understanding for the benefit of society. [LEARN MORE](#)

**DONATE**  
Make a difference

**FUNDRAISE**  
with ProjectWHOI

**JOIN US**  
Become a member

Copyright ©2017 Woods Hole Oceanographic Institution. All rights reserved.  
266 Woods Hole Road, Woods Hole, MA 02543-1050 U.S.A.  
General Information: [information@whoi.edu](mailto:information@whoi.edu) or (508) 548-1400  
[Privacy Policy](#)

[Unsubscribe](#)