

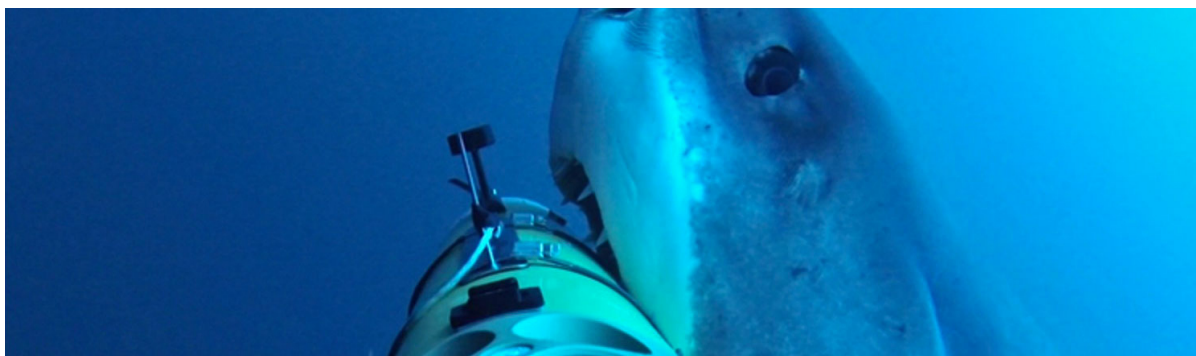
Having trouble seeing this? [View in your browser.](#)

# Woods Hole Oceanographic Institution

## BENEATH *the* SURFACE

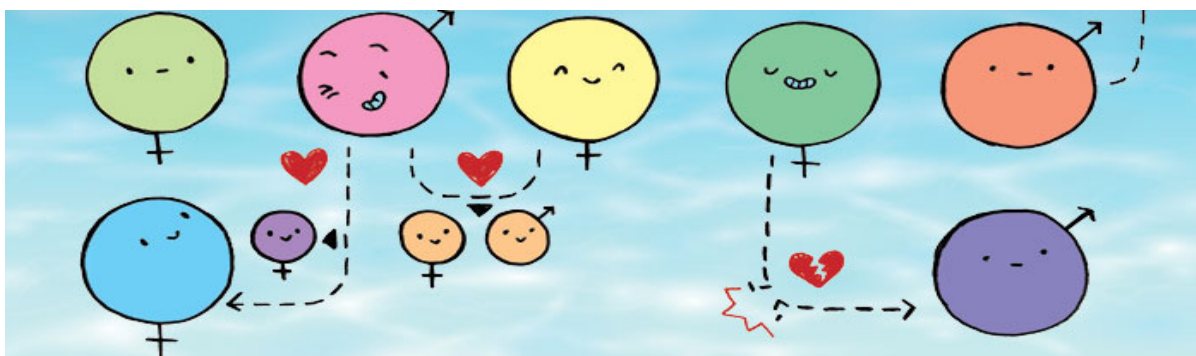
FEBRUARY 2016

### ★ ★ ★ FEATURES



### Robotic Vehicles Offer a New Tool in Study of Shark Behavior

The REMUS SharkCam has enabled groundbreaking scientific understanding of great white sharks.



### Sex, Games, and the Evolution of Gender Gaps

Just in time for Valentine's Day, MIT-WHOI Joint Program graduate Esther Shyu describes her models for understanding how sex ratios affect ecology, evolution, and the odds of finding a mate.



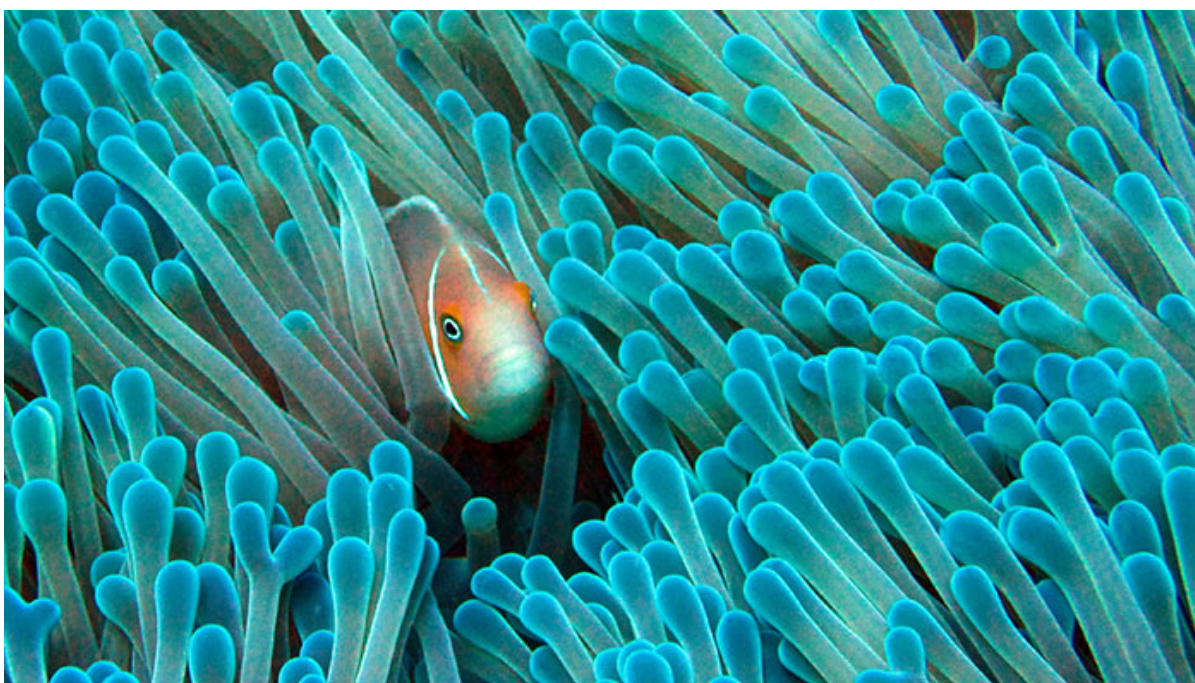
## Coral Crusader

Racing against time to predict the fate of corals in a warming ocean

---

### IMAGE OF THE MONTH

---



**Safe Haven:** An anemone fish finds refuge in its namesake location--an anemone. This pair were photographed in the [Phoenix Islands Protected Area](#) (PIPA), a place that has drawn [attention from scientists](#) of late for its size and location. At nearly the size of California, PIPA is one of the world's largest marine protected areas and is situated in the middle of the Pacific far from most forms of direct human impact. As a result, it is increasingly used as a benchmark from which to measure the effects of global environmental change, such as [warming](#) and [ocean acidification](#), on marine ecosystems worldwide. (Photo by Hanny Rivera, Woods Hole Oceanographic Institution)

---

### WHOI IN THE NEWS

---

#### » The 40,000-mile volcano

The New York Times

#### » New WHOI leader has new vision for scientific research

The Cape Cod Times

» **Ian Somerhalder visits Woods Hole Oceanographic Institution**

The Boston Globe

» **Galapagos expedition unravels mystery of seamounts and finds new shark**

Nature World News

» **Deep ocean waters are trapping vast stores of heat**

Scientific American

---

#KnowYourOcean

---



**44%**

of Earth's population lives within  
100km (60 miles) of a coast.



COMING UP

---

**Win a Trip to Woods Hole and Tour of the Nation's Newest Research Vessel, *Neil Armstrong***

#GetOnBoard R/V *Neil Armstrong*! Help celebrate the arrival of the nation's newest research ship, get a behind-the-scenes tour of Woods Hole Oceanographic Institution, and more. [Enter one of two contests](#) for a chance to win.

**WHOI.edu 2.0**

Visit our new website to learn more than ever about the ocean and WHOI's ocean science.

**Events Calendar**

View the schedule for seminars, forums, lectures and more.

**Ocean Science Exhibit Center**

Re-opens Monday, April 18, 2016

**Peanut Butter Club**

Fridays at noon in Redfield Auditorium



JOIN THE CONVERSATION

---



Join the growing WHOI community on social media and keep up with breaking news, surprising stories, and beautiful images.

**Not signed up yet?** Don't miss our monthly enewsletter to learn more about ocean science research at WHOI. [Sign up now.](#)

Where are WHOI ships now?

[START TRACKING →](#)



The Woods Hole Oceanographic Institution is dedicated to research and education to advance understanding of the ocean and its interaction with the Earth system, and to communicating this understanding for the benefit of society. [LEARN MORE](#)

**DONATE**

Make a difference.

**FUNDRAISE**

with ProjectWHOI.

**JOIN US**

Become a member.

Copyright ©2018 Woods Hole Oceanographic Institution. All Rights Reserved.  
266 Woods Hole Road, Woods Hole, MA 02543-1050 U.S.A. [Privacy Policy](#)  
General Information: [information@whoi.edu](mailto:information@whoi.edu) or (508) 548-1400

[Unsubscribe](#)



nonprofit software