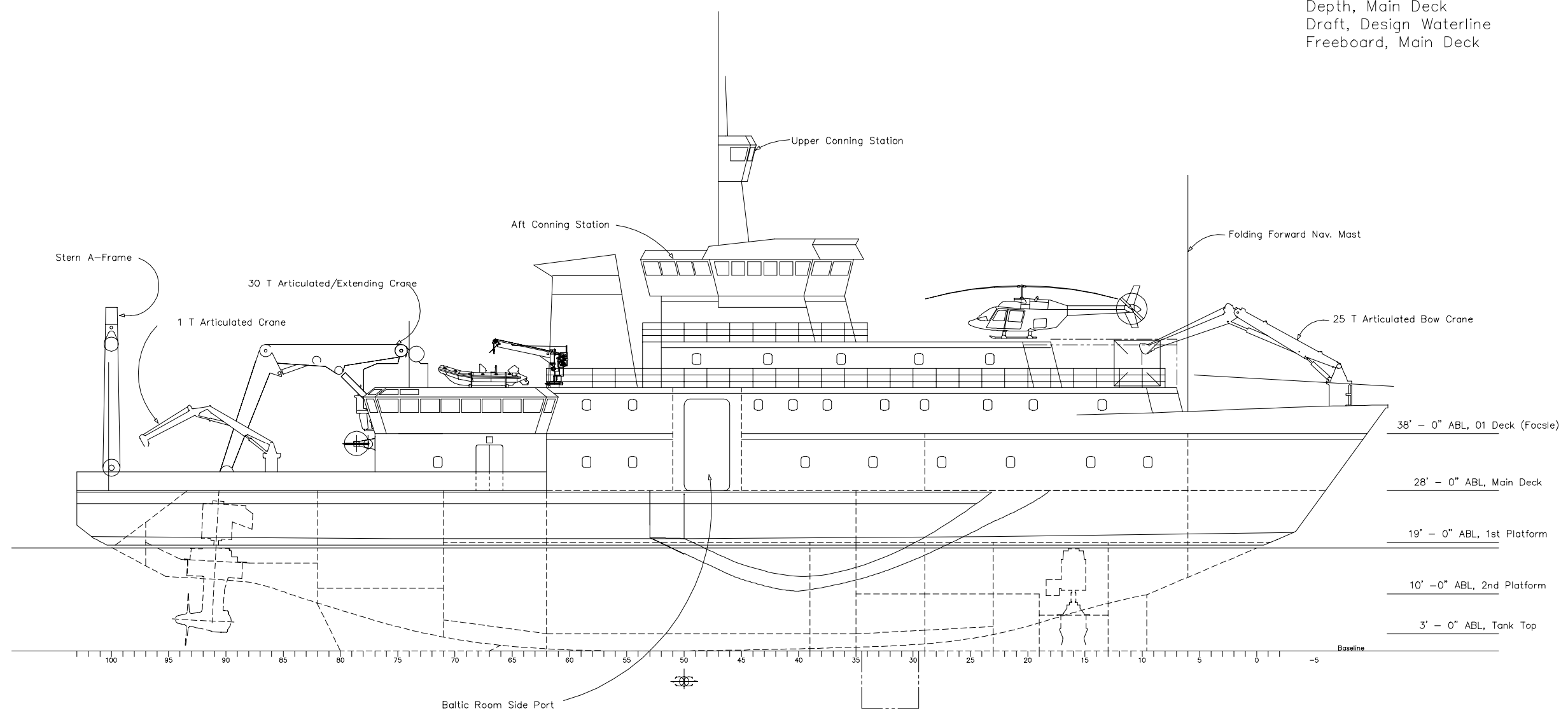



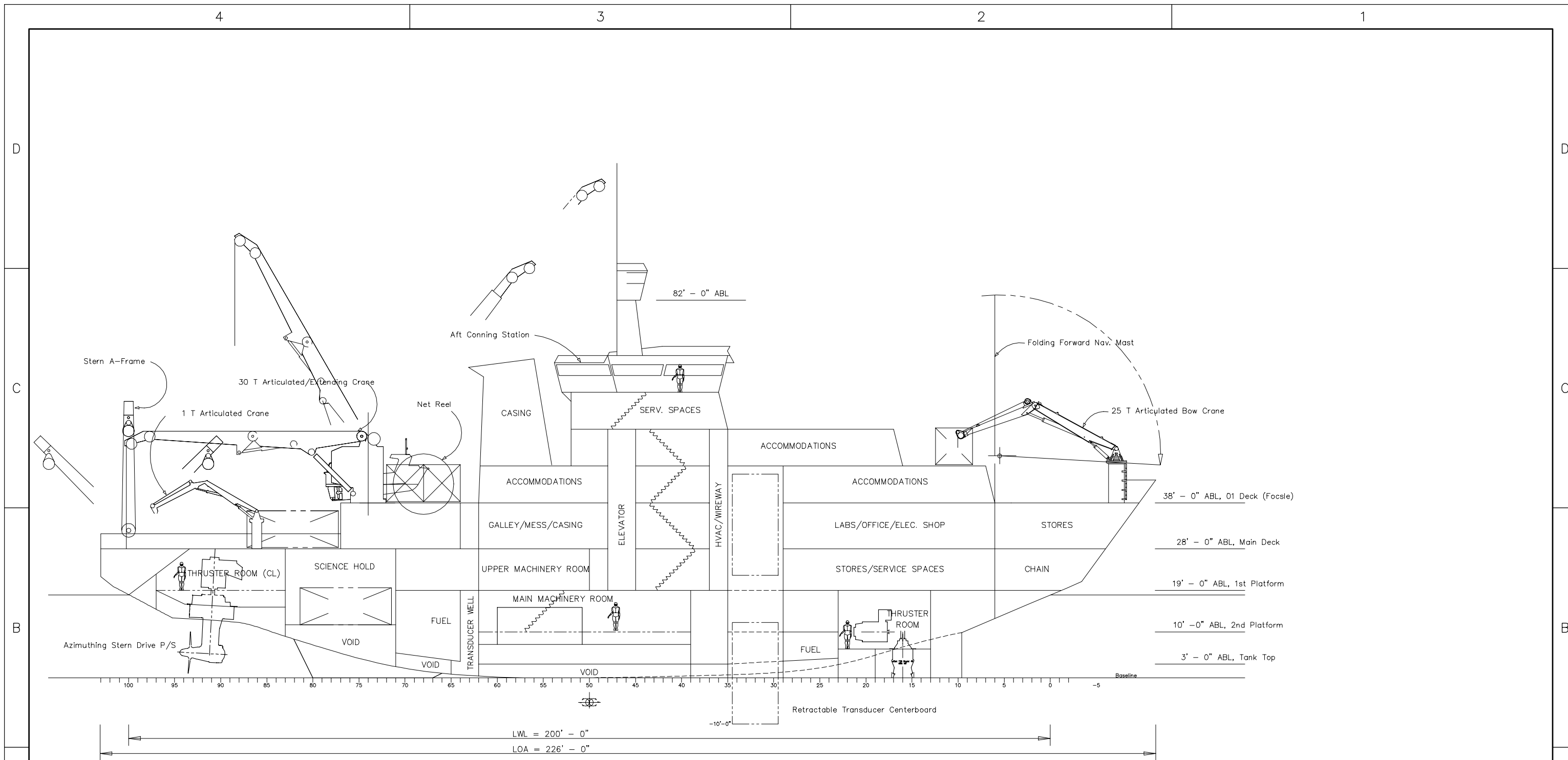
PRINCIPAL CHARACTERISTICS

Length Overall	226' - 0"
Length Waterline	200' - 0"
Beam, Maximum	52' - 0"
Depth, Main Deck	29' - 0"
Draft, Design Waterline	18' - 0"
Freeboard, Main Deck	10' - 0"




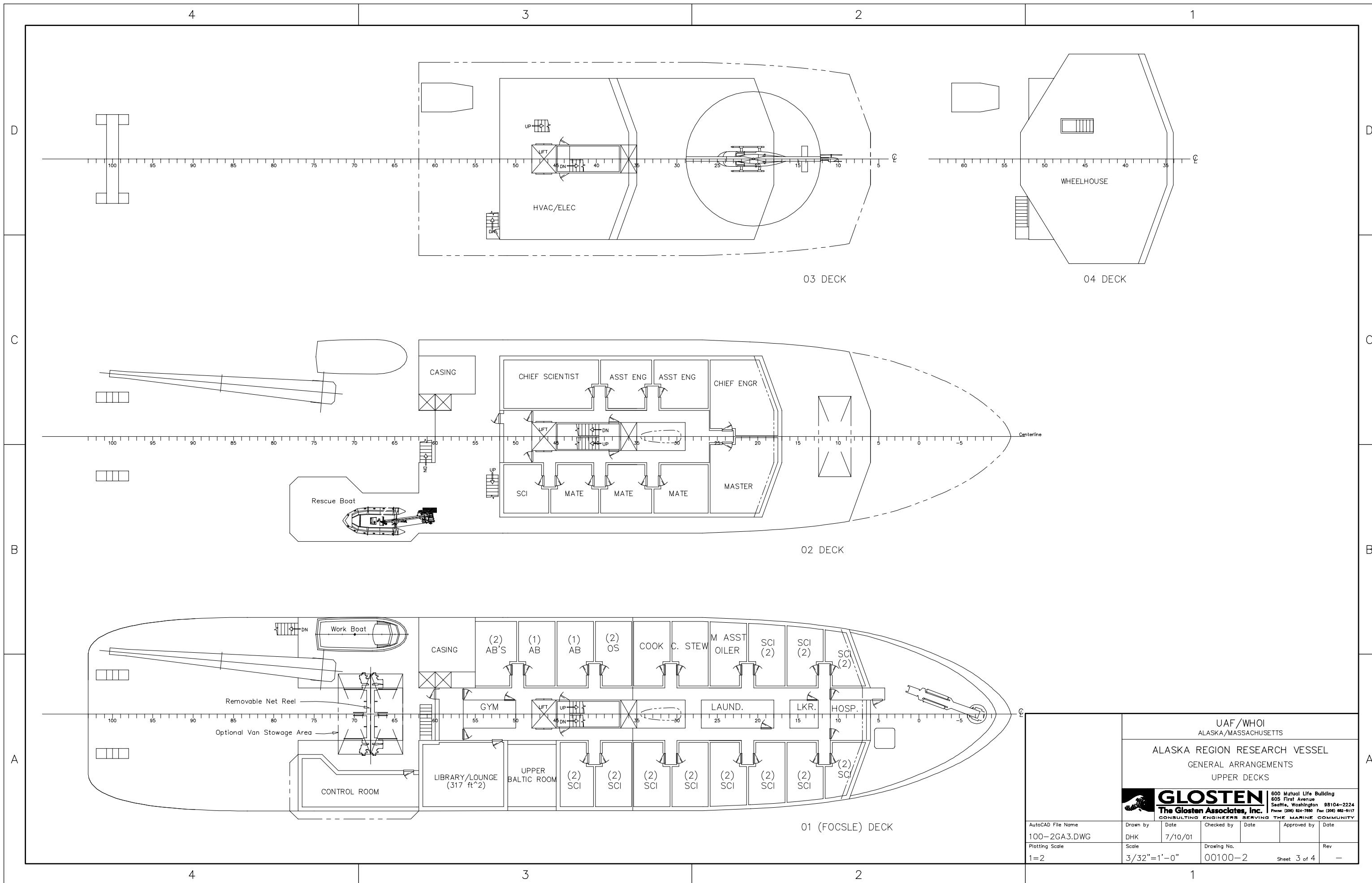
OUTBOARD PROFILE

		UAF/WHOI ALASKA/MASSACHUSETTS ALASKA REGION RESEARCH VESSEL GENERAL ARRANGEMENTS OUTBOARD PROFILE			
		 GLOSTEN The Glosten Associates, Inc. CONSULTING ENGINEERS SERVING THE MARINE COMMUNITY			
AutoCAD File Name	Drawn by	Date	Checked by	Date	Approved by
100-2GA1.DWG	DHK	7/10/01			
Plotting Scale	Scale	Drawing No.	Rev		
1=2	3/32"=1'-0"	00100-2		Sheet 1 of 4	-



INBOARD PROFILE

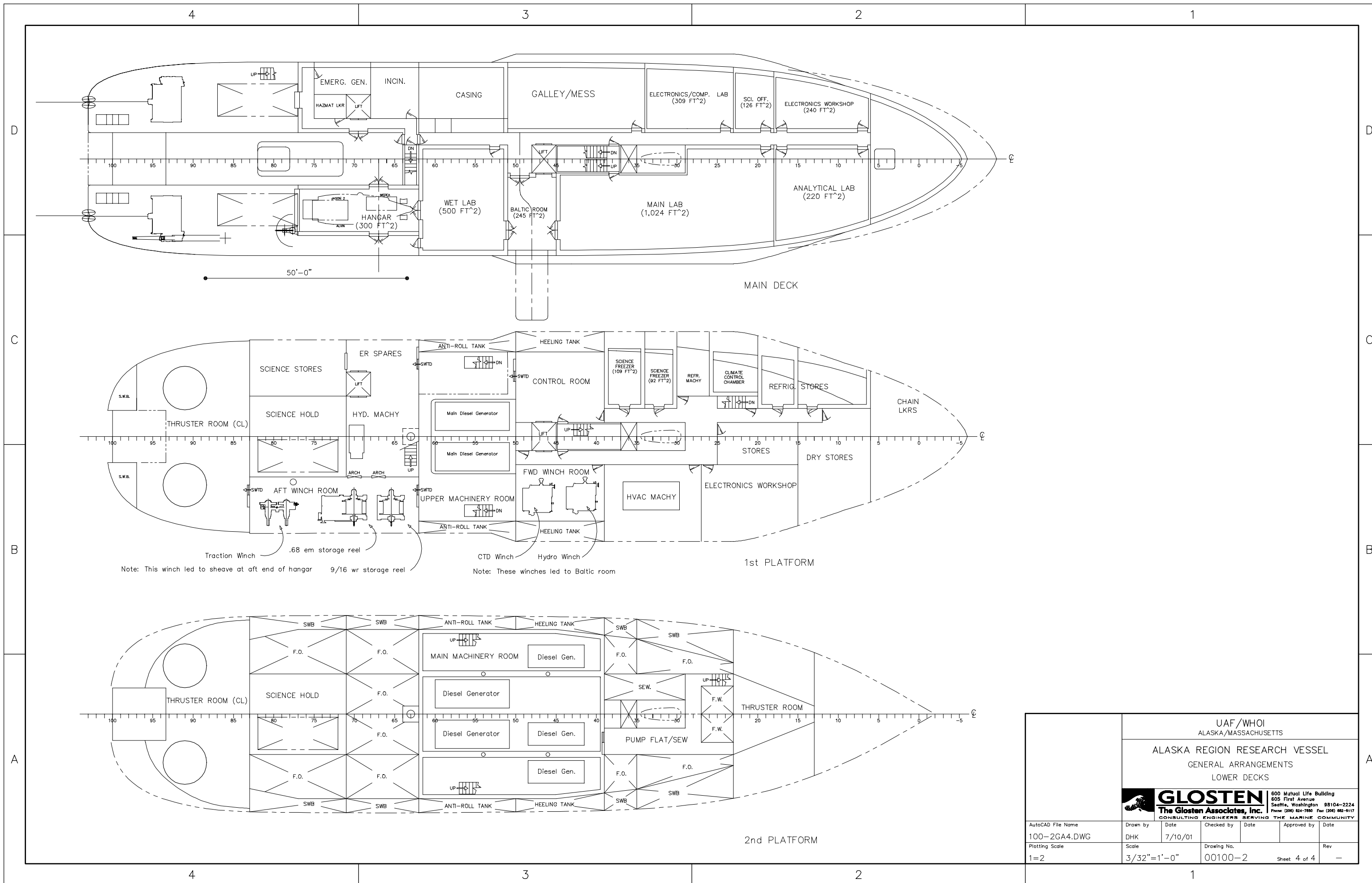
UAF/WHOI ALASKA/MASSACHUSETTS ALASKA REGION RESEARCH VESSEL GENERAL ARRANGEMENTS INBOARD PROFILE					
 GLOSTEN The Glosten Associates, Inc. <small>CONSULTING ENGINEERS SERVING THE MARINE COMMUNITY</small>					
AutoCAD File Name 100-2GA2.DWG		Drawn by DHK	Date 7/10/01	Checked by []	Date []
Plotting Scale 1=2		Scale 3/32"=1'-0"	Drawing No. 00100-2	Approved by []	Date []
				Sheet 2 of 4	Rev -



UAF/WHOI
ALASKA/MASSACHUSETTS
ALASKA REGION RESEARCH VESSEL
GENERAL ARRANGEMENTS
UPPER DECKS



AutoCAD File Name 100-2GA3.DWG	Drawn by DHK	Date 7/10/01	Checked by	Date	Approved by	Date
Plotting Scale 1=2	Scale 3/32"=1'-0"	Drawing No. 00100-2	Rev	Sheet 3 of 4		



Note: This winch led to sheave at aft end of hangar 9/16 wr storage reel

Note: These winches led to Baltic room

UAF/WHOI ALASKA/MASSACHUSETTS ALASKA REGION RESEARCH VESSEL GENERAL ARRANGEMENTS LOWER DECKS					
GLOSTEN The Glosten Associates, Inc. <small>CONSULTING ENGINEERS SERVING THE MARINE COMMUNITY</small>					
AutoCAD File Name 100-2GA4.DWG		Drawn by DHK	Date 7/10/01	Checked by []	Date []
Plotting Scale 1=2		Scale 3/32"=1'-0"	Drawing No. 00100-2	Approved by []	Date []
				Sheet 4 of 4	Rev -