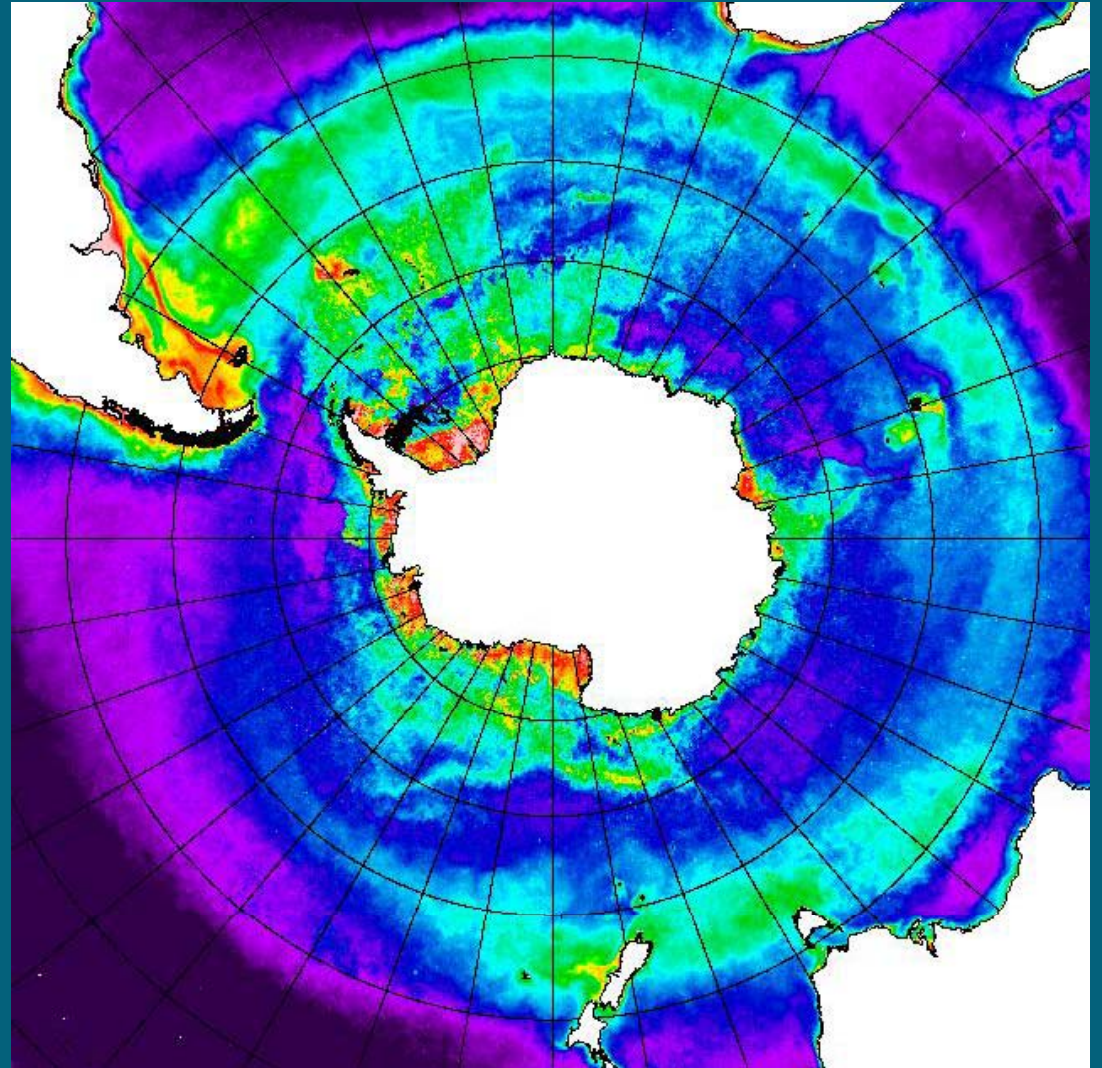


# Modeling and Synthesis of Southern Ocean Natural Iron Fertilization Workshop

June 27-29, 2011  
WHOI, Woods Hole,  
Massachusetts, USA



# Many thanks for your support!!

- Eugene Murphy, British Antarctic Survey
- Hein J.W. de Baar, Royal Netherlands Institute for Sea Research
- Eileen Hofmann, Old Dominion University
- Reiner Schlitzer, Stiftung Alfred-Wegener Institut
- George Watters/Christian Reiss, US NOAA-AMLR
- Richard Sanders, University of Southampton
- Stéphane Blain, Université Pierre et Marie Curie

# Workshop objectives

## Politically correct

- Similarities & differences in PO/CO/BO processes, rates & models between different geographic regions & seasons
- Generality of rates & models in the SO
- Current state & potential change of natural Fe fertilization, C-export & foodweb associated with climate variations

## Politically incorrect

- Identifying errors, unknowns & missing links in our understandings & estimates
- Sharing methods & models, **experts & opportunities** for enhancing the capability of each scientific team to conduct natural Fe experiments
- Forming a joint effort to fight the global warming

# Workshop expectations

- A set of manuscripts: DSR II Special Issue  
Due date: September-November
- A workshop report
  - Long report - online:
    - Executive summary (White page)
    - Narrative
    - Presentations
  - Short report – AGU EOS
- Future plans – Joint efforts

# DSR II: Special issues

- 1) Charette, et al., Thorium-234 derived export production during the BWZ project in 2006
- 2) Frant, et al., Optimal Multiparameter Analysis of Source Water Distributions in Southern Drake Passage
- 3) Frant, et al., Analysis of Horizontal and Vertical Processes Contributing to Natural Iron Supply in the Mixed Layer in Southern Drake Passage
- 4) Zhou, et al., Winter regional circulation in the southern Drake Passage and Bransfield Strait, and mesoscale circulation-offshelf transport north Elephant Island
- 5) Zhou (Handmann), et al., Large scale circulation in the southern Scotia Sea from drifter observations
- 6) Jiang, et al., Seasonal circulation and offshelf iron transport by modeling
- 7) Selph, K.E., A. Apprill, C.I. Measures, and M.T. Brown, Phytoplankton distributions in the Shackleton Transverse Ridge/Elephant Island region of the Drake Passage in February-March 2004
- 8) Bundy, Barbeau, Buck, et al., Copper speciation from the 2006 BWZ cruise
- 9) Measures, Hatta, et al., Iron distribution in 2004-2006 cruises