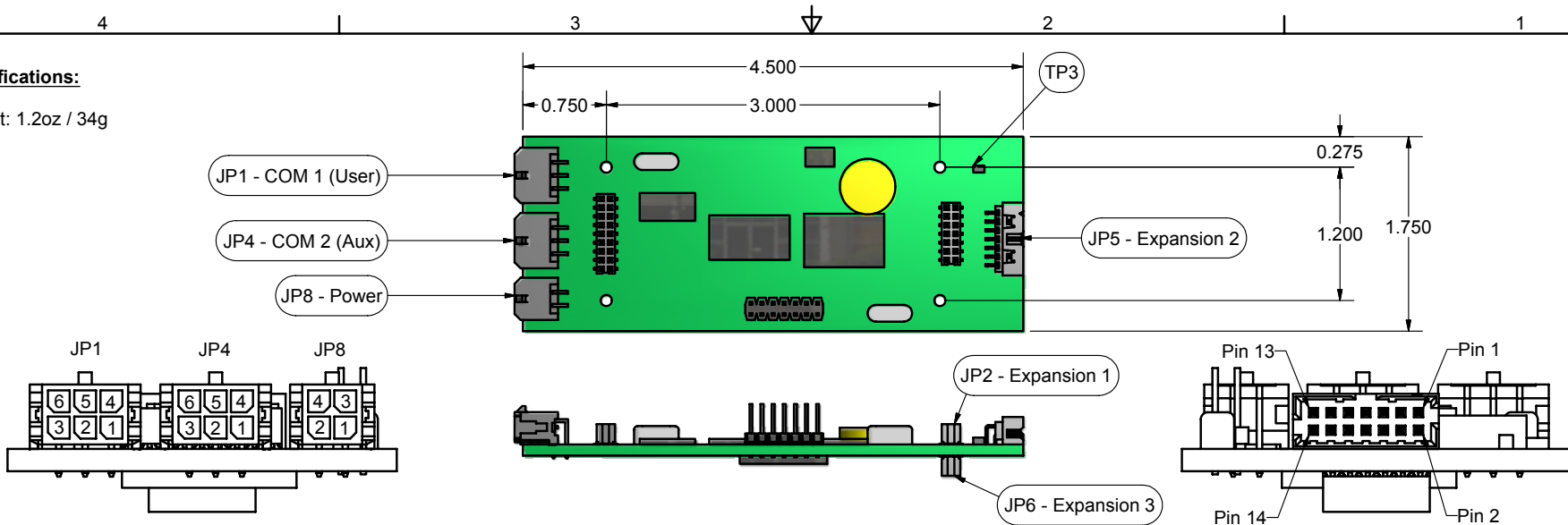


Specifications:

Weight: 1.2oz / 34g



JP1 - COM 1

Molex PN: 43045-0600

Pin	Name
1	CTS
2	RX
3	GND
4	TX
5	EXTWAKE
6	RTS

JP8 - Power

Molex PN: 43045-0400

Pin	Name
1	VIN (5V-16V)
2	VIN (5V-16V)**
3	GND
4	GND

** Applies to boards with D8 installed.

JP5 - EXPANSION 2

Molex PN: 87833-1420

Pin	Name
1	TXACTIVE
2	GPO
3	AGND
4	RXACTIVE
5	TXINHIBIT
6	RXPENDING
7	EXTSEL2
8	GPI
9	POWER AMP PWR
10	AGND
11	PRE-AMP POWER
12	ANALOG TX
13	ANALOG RX
14	AGND

JP6 - EXPANSION 3

Molex PN: 79109-12

Pin	Name
1	GND
5	EXTSEL3

Mating Connector Info

Mate for	Molex PN	Digikey PN
JP1, JP4	43025-0600	WM1785-ND
JP8	43025-0400	WM1784-ND
Pins	43030-0009	WM1839-ND
Crimp Tool	63811-2800	WM9935-ND
Extraction Tool	11-03-0043	WM9937-ND
JP5	51110-1451	WM18047-ND
Pins	50394-8100	WM18056-ND
Crimp Tool	11-01-0204	WM18057-ND

JP4 - COM 2

Molex PN: 43045-0600

Pin	Name
1	CTS
2	RX
3	GND
4	TX
5	EXTPPS
6	RTS


JP2 - EXPANSION 1

Molex PN: 79109-14

External User Control	
Pin	Name
1	GND
5	EXTSEL1

Notes:

All connectors use standard Molex pinouts.

		Woods Hole Oceanographic Institution		
		TITLE		
DESIGNED K. BALL PROJECT MANAGER L. FREITAG ENGINEER		9/8/2005		Micro-Modem v1.3 Control Drawing
K. BALL ENGINEER		9/8/2005		
SIZE	CAGE NO	DWG NO	REV	
B	88846	201002	C	
SCALE			SHEET 1 OF 1	