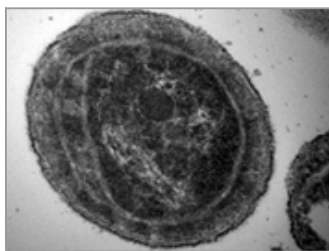


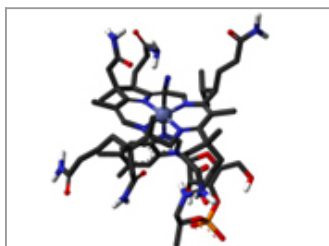
Saito Lab Marine Bioinorganic Chemistry Research



[Marine Cyanobacterial Proteomics](#)



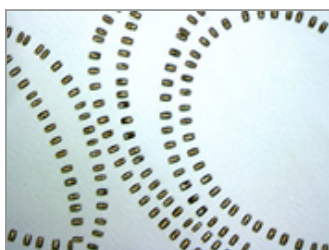
[Phytoplankton Proteomics in the Ross Sea](#)



[Cobalt and Vitamin B₁₂ Biogeochemistry](#)



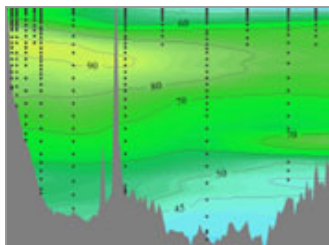
[Trace Metal-Phytoplankton Interactions in the Ross Sea](#)



[Proteomics of Colimitation in Diatoms](#)



[Metalloenzymes in Oxygen Minimum Zones](#)



[GEOTRACES Cobalt Biogeochemistry](#)

[Connecting Trace Elements and Metalloenzymes Across Marine Biogeochemical Gradients](#)

[Development of a Marine Proteomic Biomarker Capability](#)

[Development of a Biogeochemical AUV Sampler: Clio](#)

Last updated: July 13, 2014

Copyright ©2007 Woods Hole Oceanographic Institution, All Rights Reserved.
Mail: Woods Hole Oceanographic Institution, 266 Woods Hole Road, Woods Hole, MA 02543, USA.
E-Contact: info@whoi.edu; press relations: media@whoi.edu, tel. (508) 457-2000
Problems or questions about the site, please contact webdev@whoi.edu