

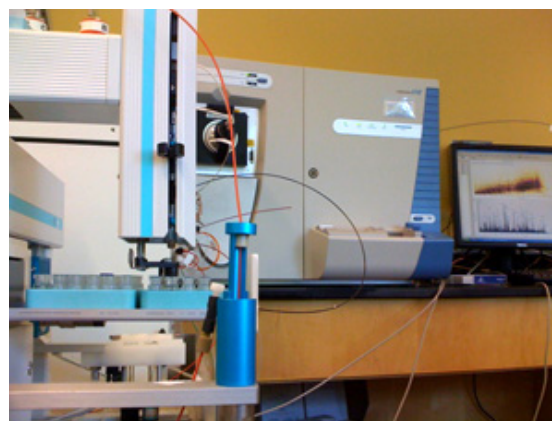
Saito Lab Marine Bioinorganic Chemistry: Facilities

Our laboratory applies a combination of trace metal analytical measurements and biochemical protein measurements to our research. For metal analyses, we use a specialized dust-free clean room environment for sample preparation and analyses, voltammetric instrumentation for speciation measurements, and inductively coupled plasma mass spectrometers (ICP-MS) for total analyses. For the protein analyses, we operate liquid chromatography mass spectrometers for global and targeted quantitative proteomic analyses. We also operate a bioinformatic computer room with Linux and SEQUEST workstations, and are members of WHOI's shared High Performance Linux Cluster. Having access to this instrumentation allows the significant analytical method development that is critical to the adaptation of proteomic biomedical technology for marine research.

As a self-contained proteomics research group, we often collaborate with other research groups on proteomic studies. For more information contact: [proteomics\[at\]whoi.edu](mailto:proteomics[at]whoi.edu) or visit our proteomics website at:

www.whoi.edu/sites/proteomicslab

For a graphic representation of proteomic analysis see this [Oceanus](#) graphic.



[Enlarge Image](#)

Linear Trap Mass Spectrometer.

Saito Laboratory Instrumentation

- Trace metal biogeochemistry clean laboratory
- Metrohm voltammetry systems for metal speciation and totals
- Phytoplankton and bacteria culture facilities
- Protein extraction equipment
- Q-Exactive Mass Spectrometer
- Fusion Tribrid Mass Spectrometer
- Vantage Triple Quadrupole Mass Spectrometer
- ICap-Q Inductively Coupled Mass Spectrometer
- Multi-Dimensional and Nanoflow Liquid Chromatography Systems
- Access to LTQ-FT high resolution mass spectrometer
- Access to Element 2 and Neptune Multi-Collector ICP Mass Spectrometers
- Access to 1200 CPU HPC Linux cluster
- Field Sampling Equipment for Trace Metal and Protein Sampling

Last updated: July 13, 2014

Copyright ©2007 Woods Hole Oceanographic Institution, All Rights Reserved.

Mail: Woods Hole Oceanographic Institution, 266 Woods Hole Road, Woods Hole, MA 02543, USA.

E-Contact: info@whoi.edu; press relations: media@whoi.edu, tel. (508) 457-2000

Problems or questions about the site, please contact webdev@whoi.edu