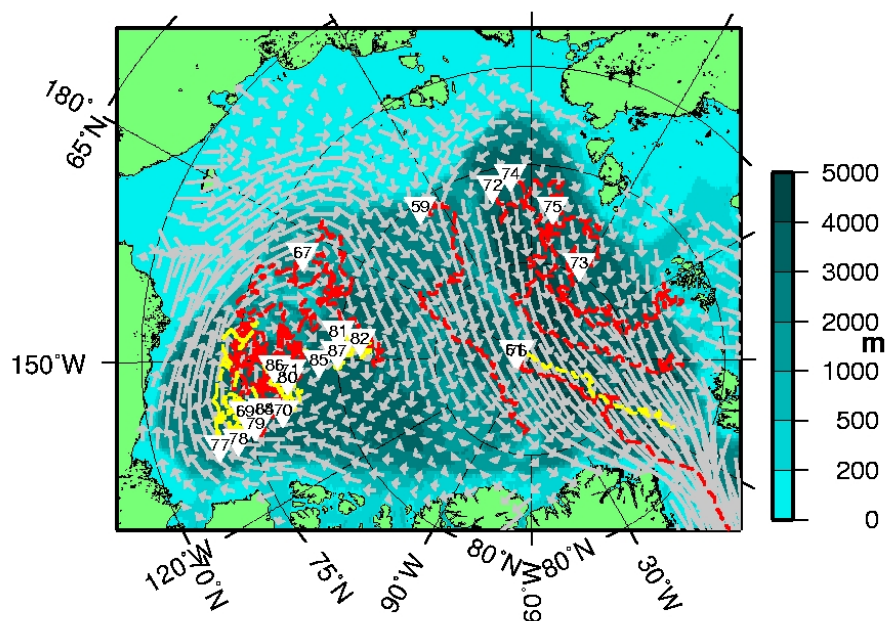


Ice-Tethered Profiler: Active Systems

Deployment locations (triangles), last profiles (crosses), and drift tracks of all ITPS deployed in 2013 (red) and 2014 (yellow).



Last updated: October 23, 2014

Copyright ©2007 Woods Hole Oceanographic Institution, All Rights Reserved.
Mail: Woods Hole Oceanographic Institution, 266 Woods Hole Road, Woods Hole, MA 02543, USA.
E-Contact: info@whoi.edu; press relations: media@whoi.edu, tel. (508) 457-2000
Problems or questions about the site, please contact webdev@whoi.edu