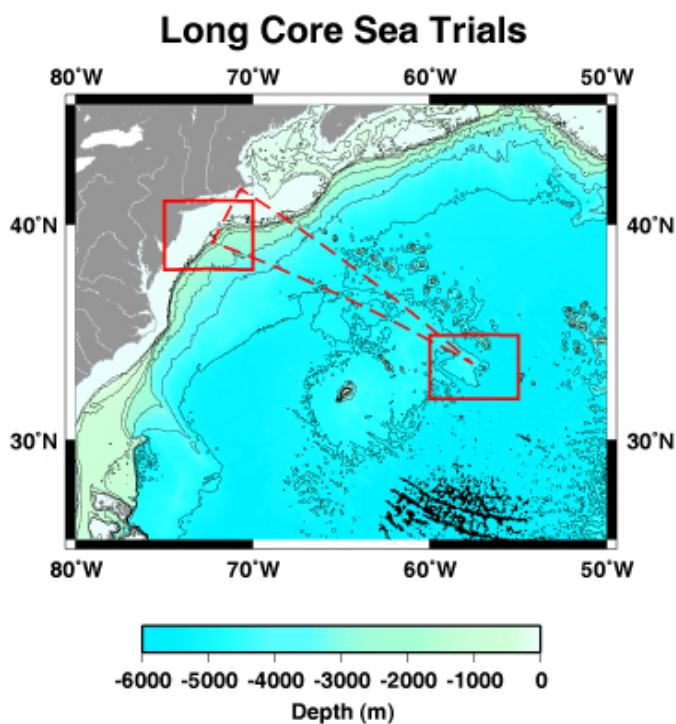
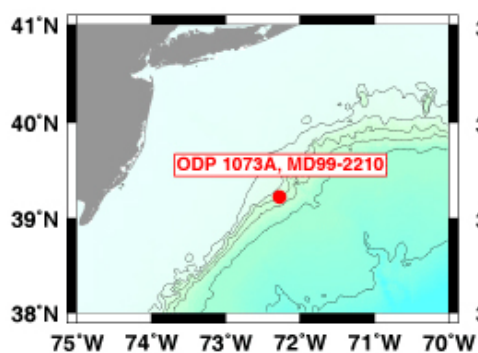


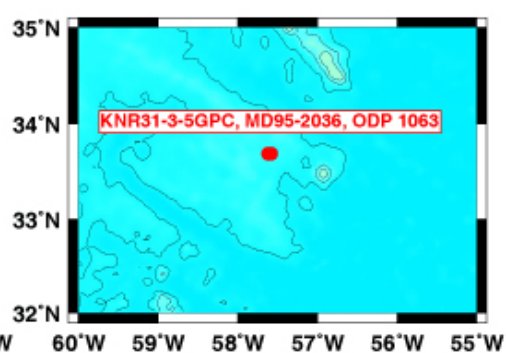
Long Core: Cruise Track



New Jersey Margin



Bermuda Rise



The cruise track of KNR191 (August-September 2007), sea trials for the new long core system. The field work took place at Bermuda Rise and New Jersey margin at locations previously cored by the Ocean Drilling Program Advanced Piston Core and the Marion Dufresne Calypso core. Seven new piston cores were recovered from Bermuda Rise and one from New Jersey margin. (See core recovery)

Last updated: December 20, 2010

Copyright ©2007 Woods Hole Oceanographic Institution, All Rights Reserved.

Mail: Woods Hole Oceanographic Institution, 266 Woods Hole Road, Woods Hole, MA 02543, USA.

E-Contact: info@whoi.edu; press relations: media@whoi.edu, tel. (508) 457-2000

Problems or questions about the site, please contact webdev@whoi.edu