

## Ice-Tethered Profiler: ITP 11 Data Description

In the surface package, the GPS receiver obtained locations, buoy temperature and battery voltage status every hour, while the package circled the perimeter of the Beaufort Gyre from the northwest around to the southwest for over two years. The ITP profiler was configured with a standard battery to operate on a standard sampling schedule of 2 one-way profiles each day, with an expected battery lifetime of about 1500 profiles. However, the ITP attempted 1690 profiles, most (91%) which were nearly full profiles (with exceptions from the software reset problem, obstruction with the bottom, and near the end due to excessive drift speeds).

The plots to the right are of the final, calibrated, edited data (as opposed to the raw data presented on the active instrument pages).

See the Data Products tab to the left for descriptions of the three levels (I, II, III) of data processing and to access all data.

*ITP 11 data can also be found at the links below:*

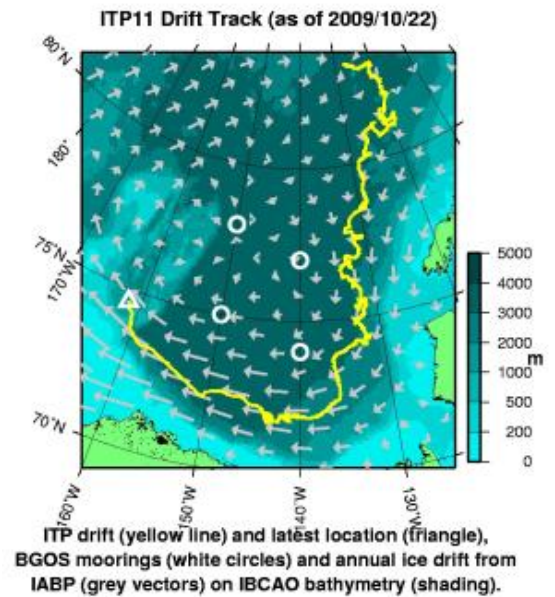
Level II hourly buoy location data in ASCII format: [itp11rawlocs.dat](#)

Level III 1-Hz processed profile data in MATLAB format: [itp11cormat.tar.Z](#) and [itp11cormat.zip](#)

Level III 1-db bin-averaged processed profile data in MATLAB format: [itp11final.mat](#)

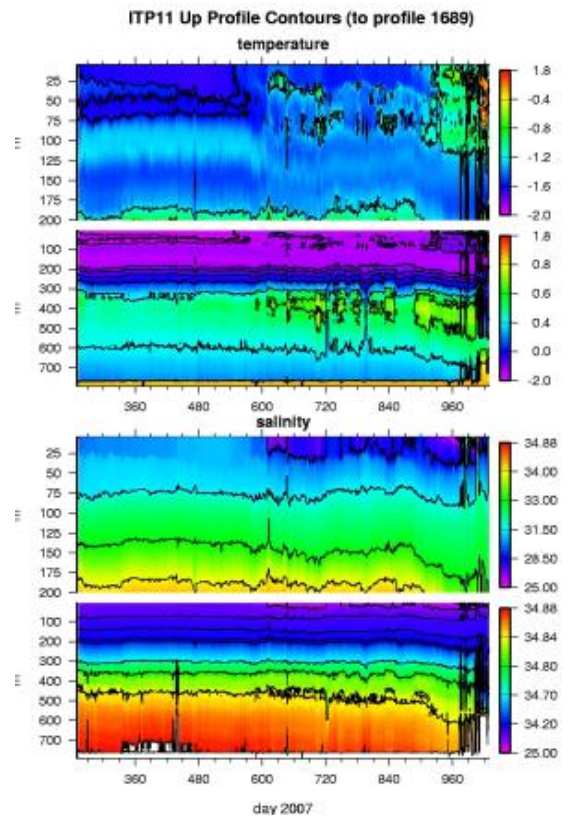
Level III 1-db bin-averaged processed profile data in ASCII format: [itp11final.tar.Z](#) and [itp11final.zip](#)

*Last updated: October 23, 2014*



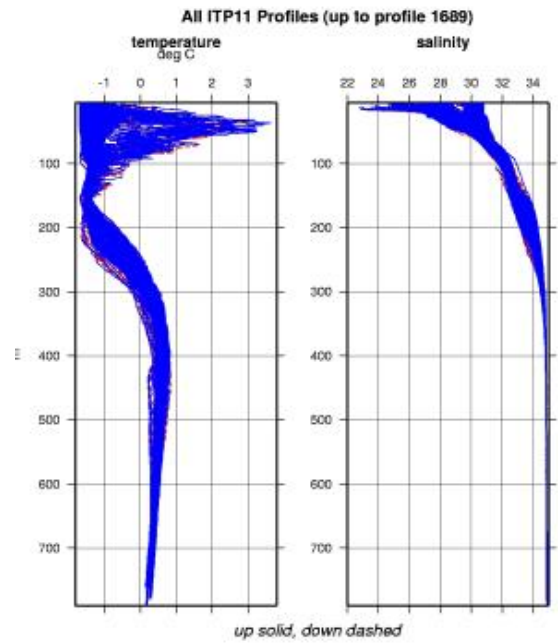
[Enlarge Image](#)

Plot of buoy locations.



[Enlarge Image](#)

ITP 11 temperature and salinity contours.



[Enlarge Image](#)

Composite plot of ITP temperature and salinity profiles.

Copyright ©2007 Woods Hole Oceanographic Institution, All Rights Reserved.

Mail: Woods Hole Oceanographic Institution, 266 Woods Hole Road, Woods Hole, MA 02543, USA.

E-Contact: [info@whoi.edu](mailto:info@whoi.edu); press relations: [media@whoi.edu](mailto:media@whoi.edu), tel. (508) 457-2000

Problems or questions about the site, please contact [webdev@whoi.edu](mailto:webdev@whoi.edu)