

Human Resources

Scientific Community in Woods Hole

Woods Hole is a world center for marine, biomedical, and environmental science. Its reputation in this broad field may seem out of proportion to its small size, yet, in addition to several smaller enterprises and labs, Woods Hole contains two large private organizations (the Marine Biological Laboratory and the Woods Hole Oceanographic Institution) and two federal government facilities (the National Marine Fisheries Service and the U.S. Geological Survey). Together, these larger institutions occupy some 170 buildings, operate a dozen research vessels and collecting boats, employ more than 1,500 year-round people, and offer instruction to approximately 500 students.

[History of the Scientific Community](#)



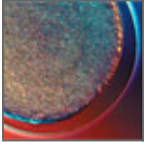
Since 1871, Woods Hole has grown into a world center for marine, biomedical, and environmental science.

[National Marine Fisheries Service \(NMFS\)](#)



The National Marine Fisheries Service's Woods Hole Laboratory conducts research on fisheries resources and the fishermen who harvest them, and on marine mammals and other protected resources in the Northwest Atlantic Ocean.

[Marine Biological Laboratory \(MBL\)](#)



The Marine Biological Laboratory (MBL) is an international center devoted to improving the human condition through basic research and education in biology, biomedicine, and environmental science.

[Woods Hole Oceanographic Institution \(WHOI\)](#)



The Woods Hole Oceanographic Institution (WHOI) is a private, nonprofit research and higher education facility dedicated to the study of all aspects of marine science and engineering and to the education of marine researchers.

[United States Geological Survey \(USGS\)](#)



Earth scientists at the U.S. Geological Survey's Woods Hole Science Center explore and study the geology, chemistry, and physics of the underwater areas offshore of the United States.

[Sea Education Association \(SEA\)](#)



Sea Education Association (SEA) has been a leader in marine education, developing an understanding of the importance of the ocean and of its powerful role in seemingly every aspect of our lives.

[Woods Hole Research Center](#)



The Woods Hole Research Center was founded in 1985 to address global environmental problems. The 40-member staff engages in scientific research, global environmental policy, and education.

Last updated: December 4, 2013

Copyright ©2007 Woods Hole Oceanographic Institution, All Rights Reserved.

Mail: Woods Hole Oceanographic Institution, 266 Woods Hole Road, Woods Hole, MA 02543, USA.

E-Contact: info@whoi.edu; press relations: media@whoi.edu, tel. (508) 457-2000

Problems or questions about the site, please contact webdev@whoi.edu