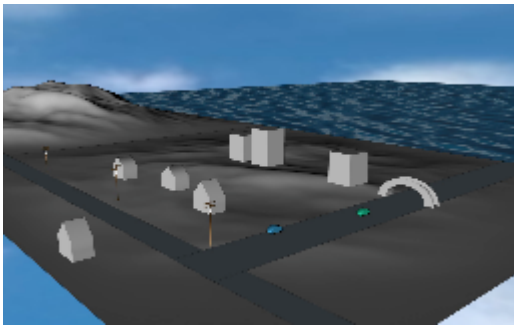
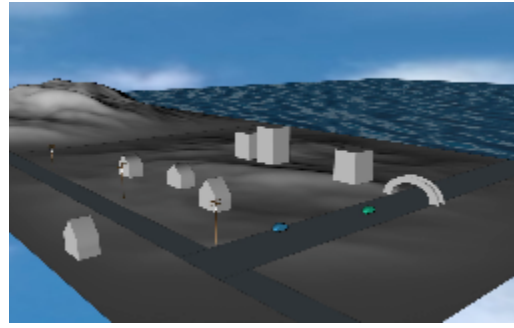


1. Prepare for a tsunami



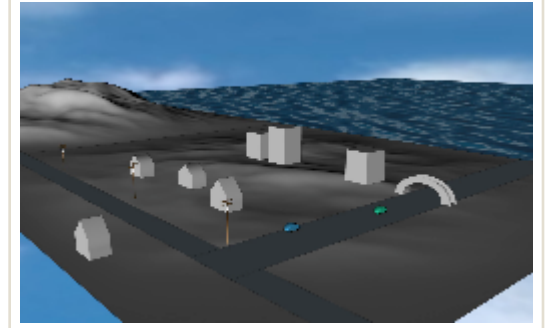
1.1 WIDE:

Know the warning signs Earthquake - image shakes



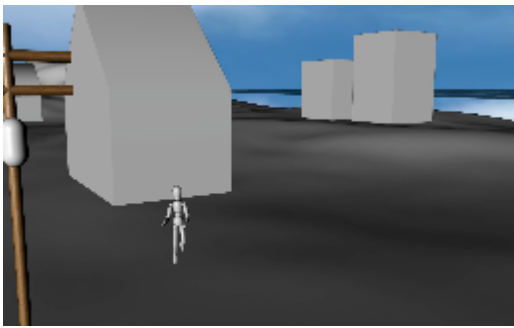
1.2 WIDE:

Know the warning signs - Receding water - show the water at the shore line recede - different perspective if necessary.



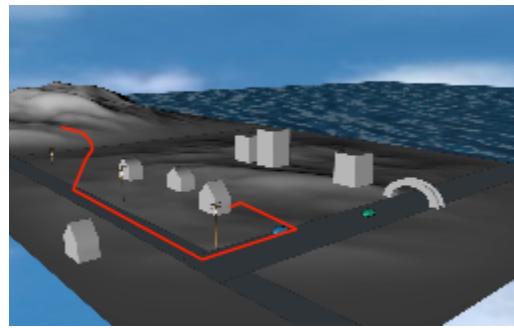
1.3 WIDE:

Know the warning signs - Warning or evacuation - show sirens and/or people leaving area.



1.4 MEDIUM:

During a tsunami - Protect yourself - show figure getting in doorway or under table



1.5 WIDE:

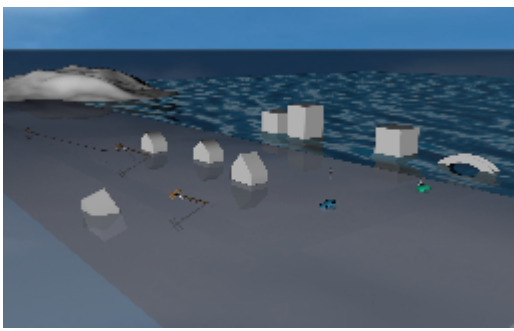
Evacuate - Show evacuation route to higher ground. Maybe show figures moving along route.



1.6 WIDE:

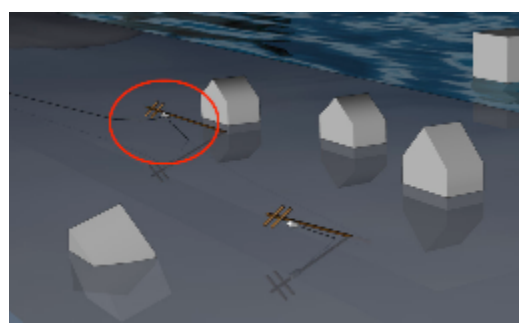
After a tsunami

2. After a tsunami



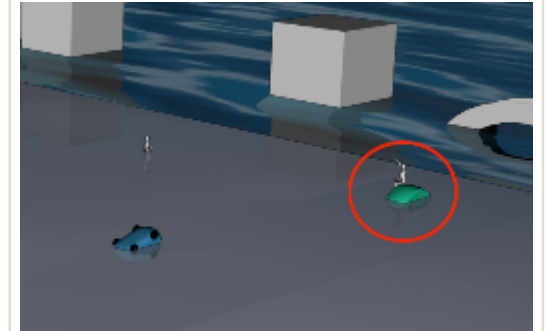
2.1 WIDE:

After a tsunami - Stay away from coastal or low-lying areas.



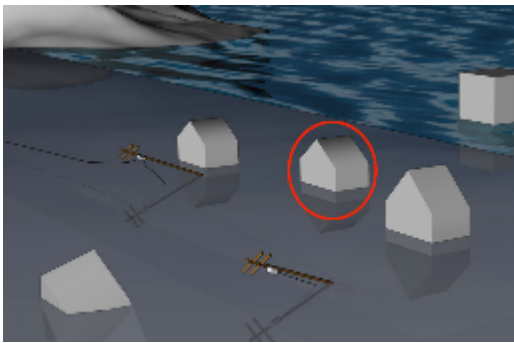
2.2 MEDIUM:

Avoid downed power lines.



2.3 MEDIUM:

Help injured or trapped persons.



2.4

Stay out of the building if waters remain around it.