

SESSION 5: Role of physics on setting and linking traits

Introduction:

3:50 - 4:00pm

Speakers: Lan Smith

4:00 – 4:20pm

Marina Levy

4:20 – 4:40pm

Bror Jonsson

4:40 – 5:00pm

Moderated Discussion

5:00 - 5:30pm

Moderators: Andrew Barton/Stephanie Dutkiewicz

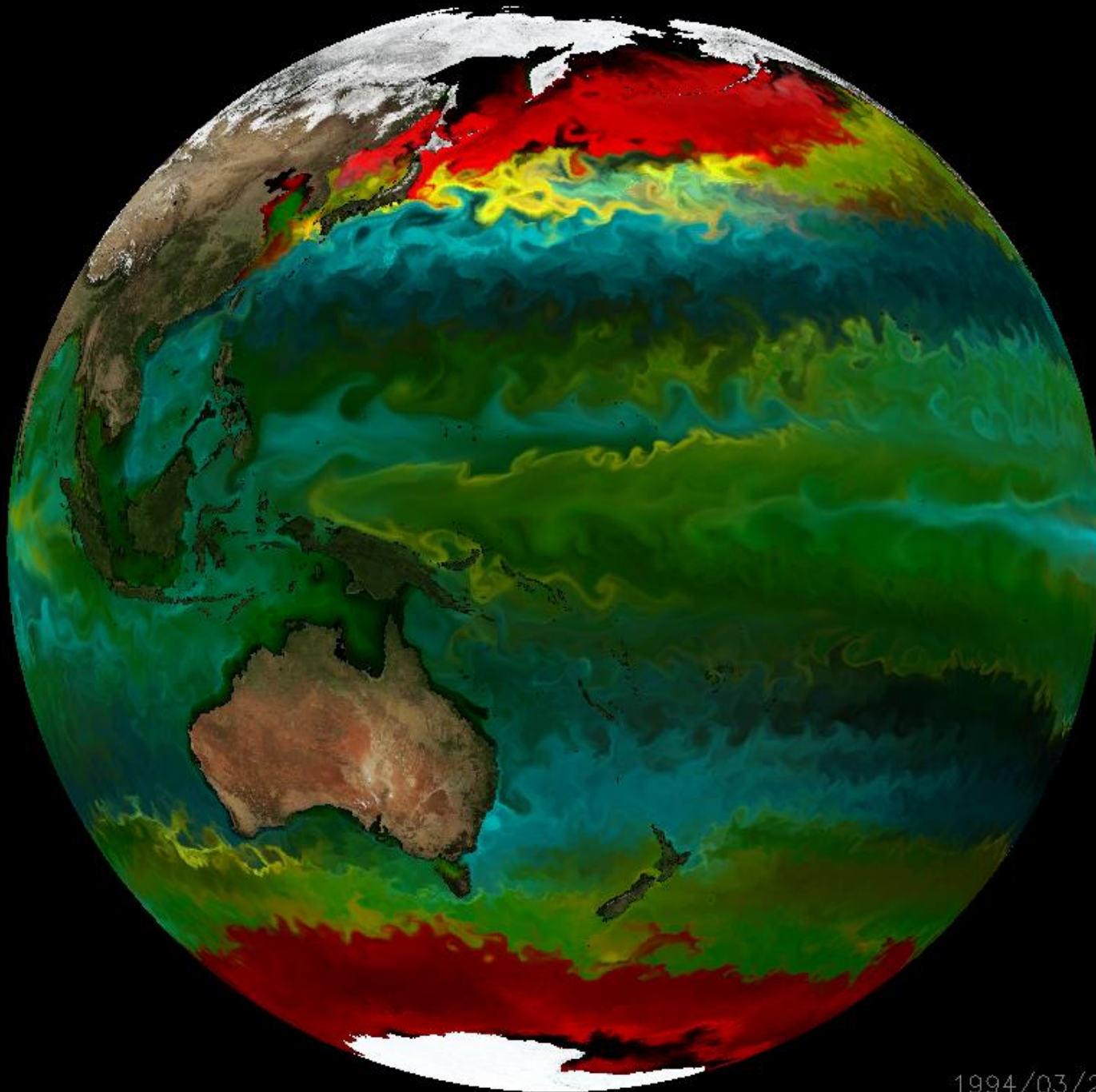
Panelists: Thomas Kiørboe

Sophie Clayton

Tatiana Rynearson

Posters

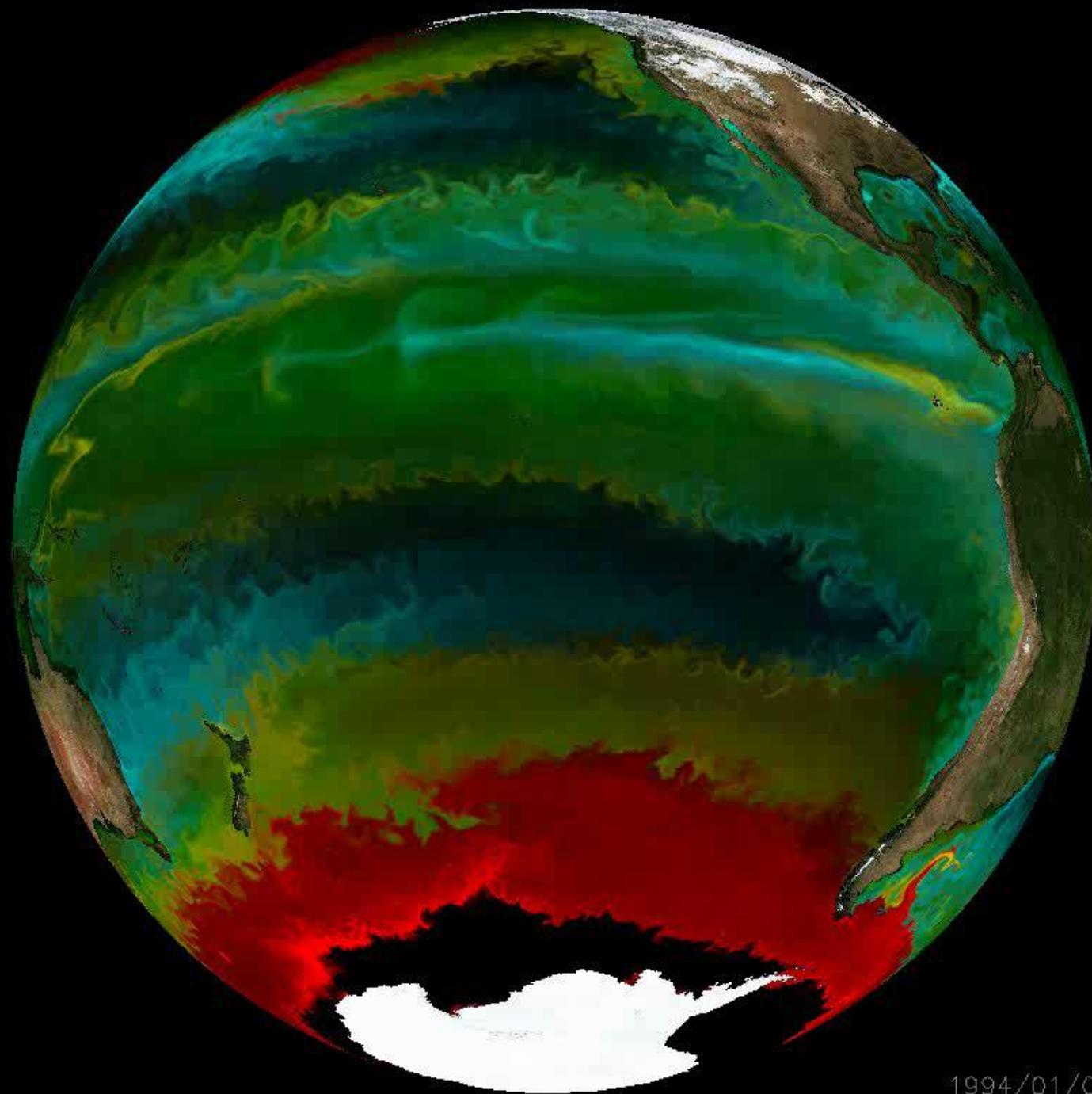
5:30 – 7:00pm



Dominant
Phytoplankton
Type:
Diatom
Other large
Prochlorococcus
Other pico

Movie
credit:
Oliver Jahn,
MIT

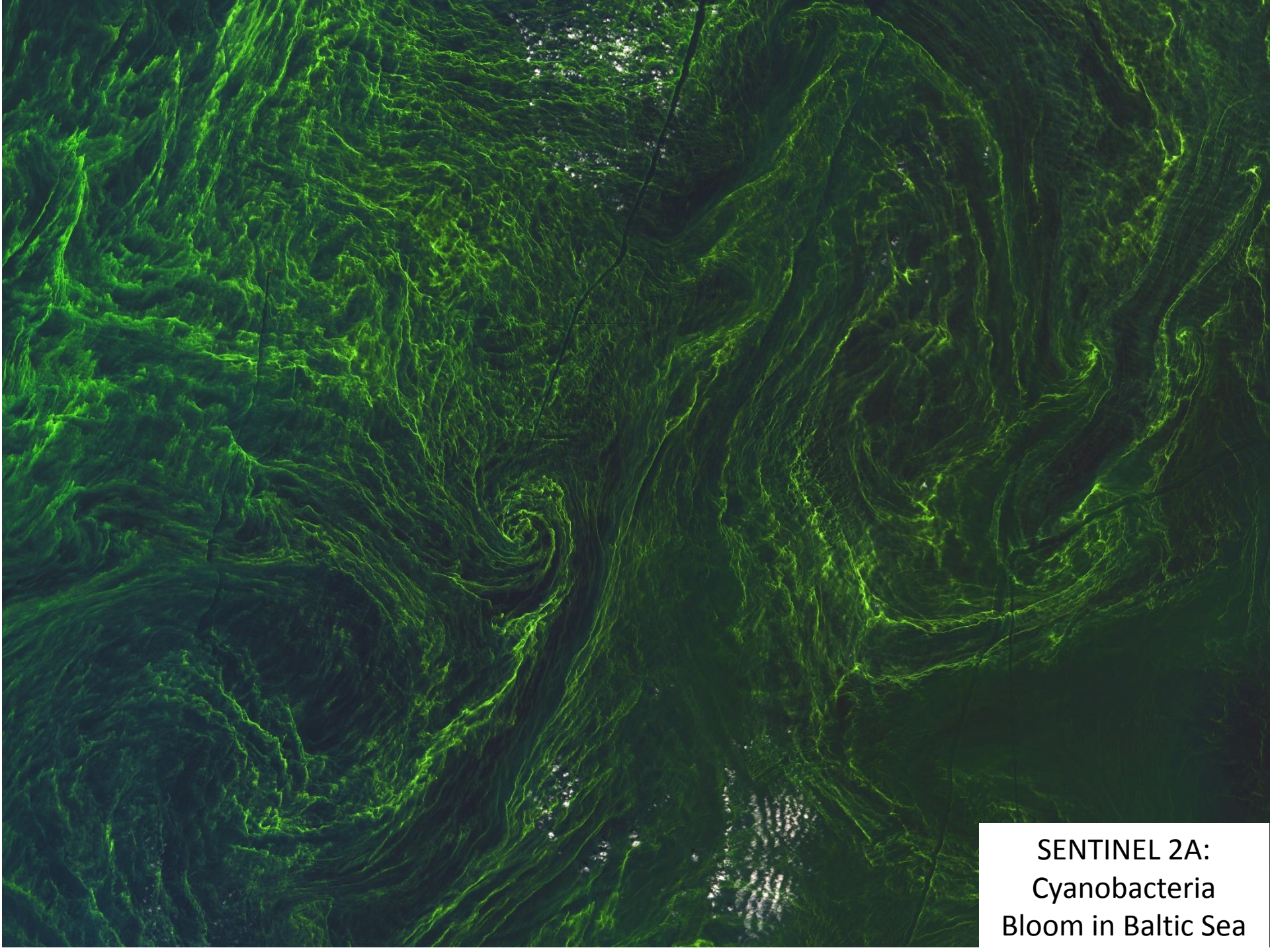
1994/03/23



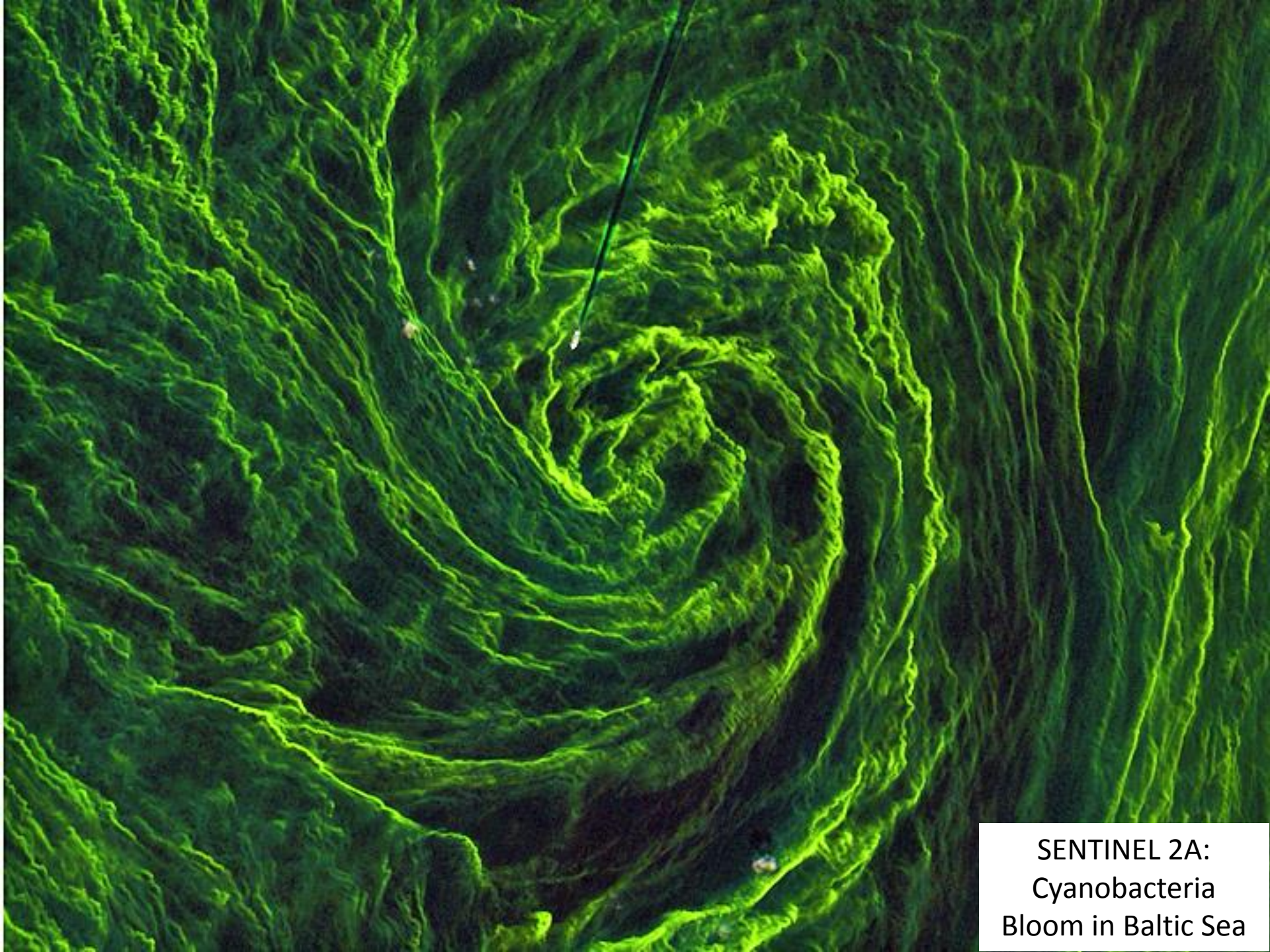
Dominant
Phytoplankton
Type:
Diatom
Other large
Prochlorococcus
Other pico

Movie
credit:
Oliver Jahn,
MIT

1994/01/01

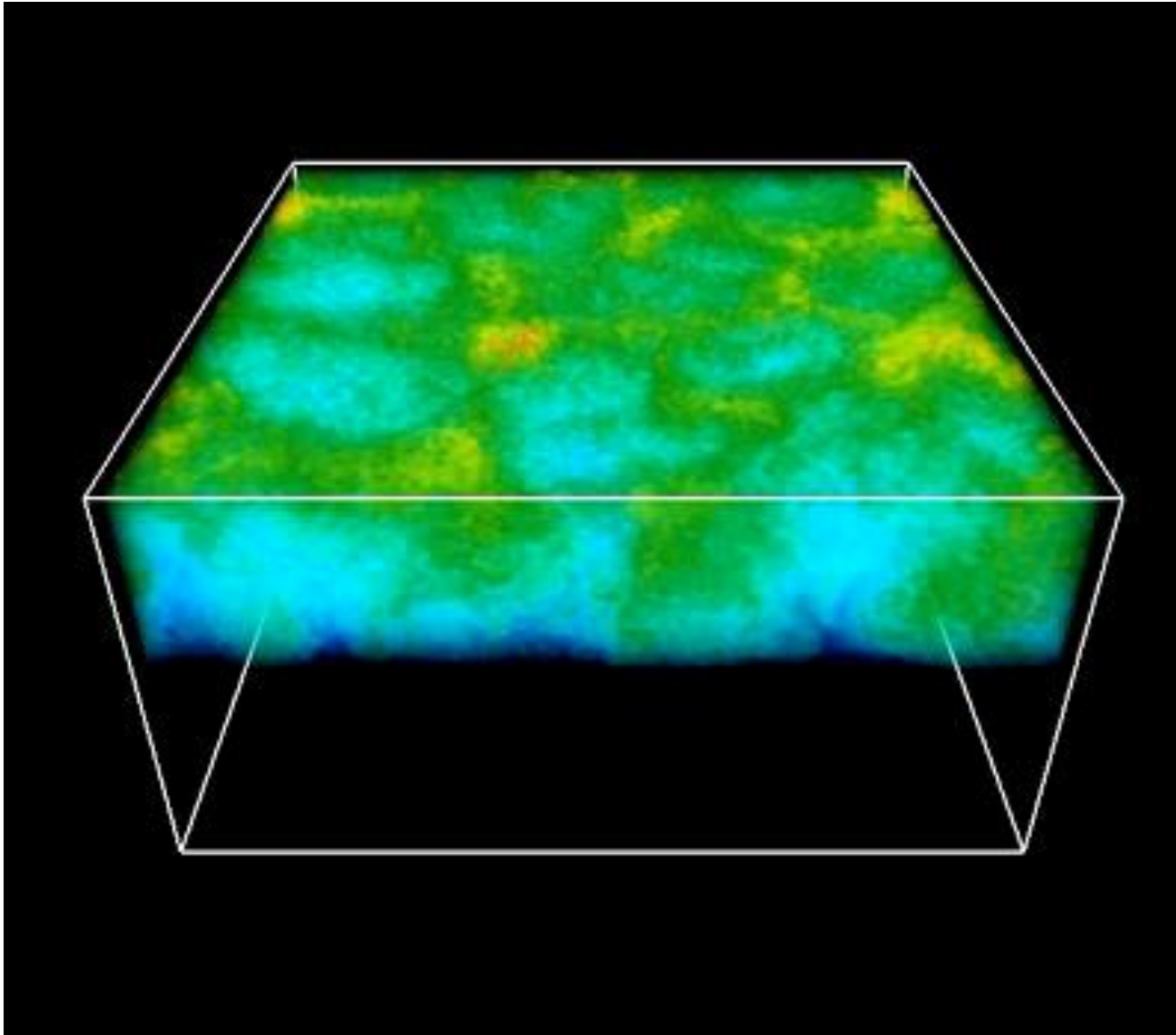


SENTINEL 2A:
Cyanobacteria
Bloom in Baltic Sea



SENTINEL 2A:
Cyanobacteria
Bloom in Baltic Sea

Phytoplankton concentration
(yellow=high; blue=low)



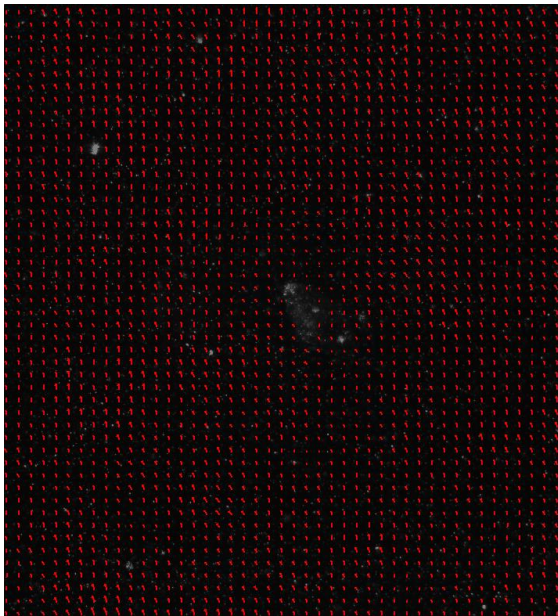
150m

Movie: John Taylor, Cambridge U
(Taylor and Ferrari, GRL, 2011)

Physics at the Scale of the Organism

Fluid signal
jumping copepods

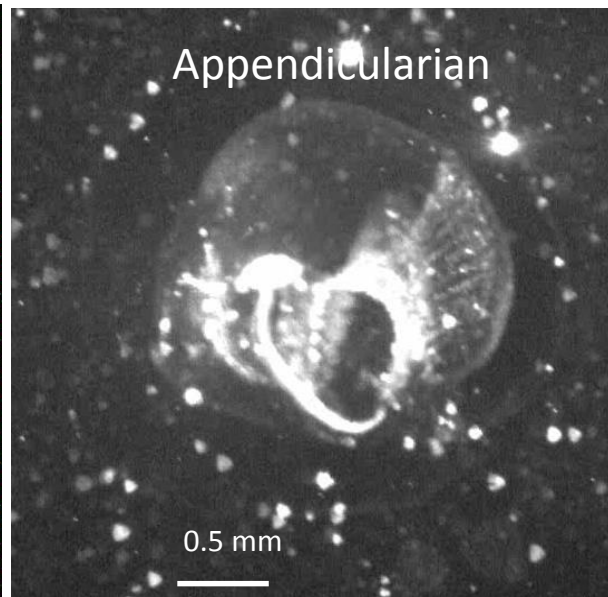
SloMo 1:200



0.3 mm

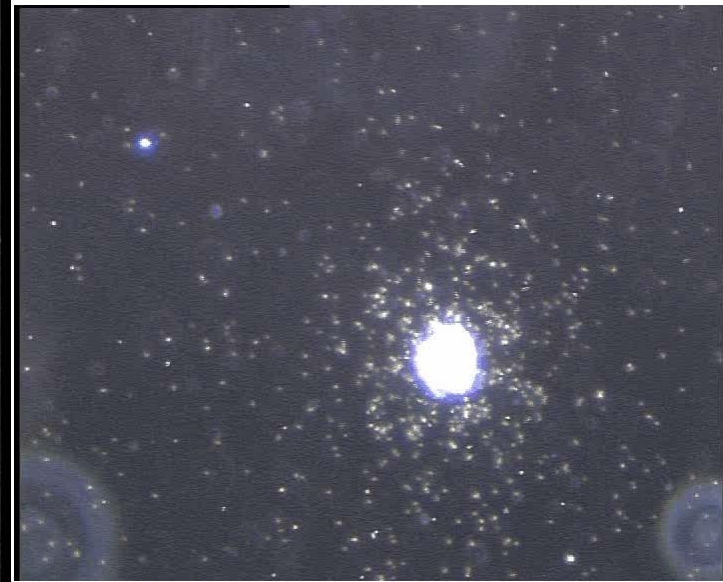
Feeding current
appendicularian

Real time



0.5 mm

Bacteria climbing
chemical gradient
around particles



0.7 mm

Thomas Kiørboe

Centre for Ocean Life, DTU Aqua

SESSION 5: Role of physics on setting and linking traits

Introduction:

3:50 - 4:00pm

Speakers: Lan Smith

4:00 – 4:20pm

Marina Levy

4:20 – 4:40pm

Bror Jonsson

4:40 – 5:00pm

Moderated Discussion

5:00 - 5:30pm

Moderators: Andrew Barton/Stephanie Dutkiewicz

Panelists: Thomas Kiørboe

Sophie Clayton

Tatiana Rynearson

Posters

5:30 – 7:00pm