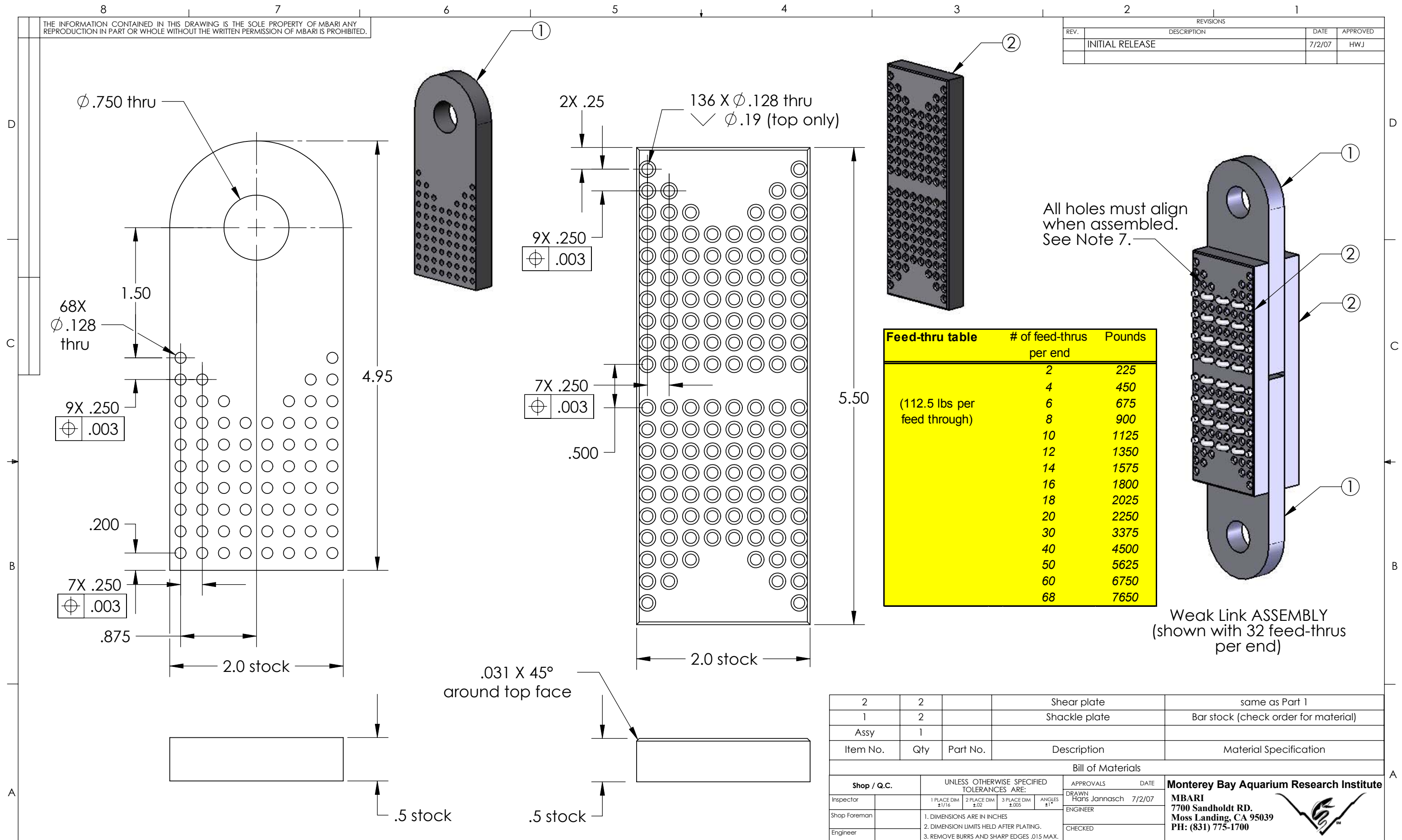


THE INFORMATION CONTAINED IN THIS DRAWING IS THE SOLE PROPERTY OF MBARI ANY REPRODUCTION IN PART OR WHOLE WITHOUT THE WRITTEN PERMISSION OF MBARI IS PROHIBITED.

REVISIONS			
REV.	DESCRIPTION	DATE	APPROVED
INITIAL RELEASE		7/2/07	HWJ



Feed-thru table	# of feed-thrus per end	Pounds
	2	225
	4	450
(112.5 lbs per feed through)	6	675
	8	900
	10	1125
	12	1350
	14	1575
	16	1800
	18	2025
	20	2250
	30	3375
	40	4500
	50	5625
	60	6750
	68	7650

Weak Link ASSEMBLY (shown with 32 feed-thrus per end)

Note 7. The purpose of the GD&T is to assure that any four pieces can be assembled as shown and that all overlying holes are concentric to within .003 in.

2	2		Shear plate	same as Part 1
1	2		Shackle plate	Bar stock (check order for material)
Assy	1			
Item No.	Qty	Part No.	Description	Material Specification

Bill of Materials					
Shop / Q.C.	UNLESS OTHERWISE SPECIFIED TOLERANCES ARE:			APPROVALS	DATE
Inspector	1 PLACE DIM ±1/16	2 PLACE DIM ±.02	3 PLACE DIM ±.005	ANGLES ±1°	DRAWN Hans Jannasch 7/2/07
Shop Foreman	1. DIMENSIONS ARE IN INCHES			ENGINEER	
Engineer	2. DIMENSION LIMITS HELD AFTER PLATING.			CHECKED	
	3. REMOVE BURRS AND SHARP EDGES .015 MAX.			PROJECT NO.	701615
	4. MACHINED FILLET RADII .0150-.030.			PROJECT	Juan de Fuca 2
NEXT ASSY Description	NEXT ASSY Number	5. MACHINED DIAMETERS ON A COMMON CENTERLINE CONCENTRIC WITHIN .005			
		6. PERPENDICULARITY & PARALLELISM OF MACHINED SURFACES .002 PER INCH. MAX .012 INCHES FOR SINGLE SURFACE.			
Application	DO NOT SCALE DRAWING		WEIGHT		

Monterey Bay Aquarium Research Institute
MBARI
 7700 Sandholdt RD.
 Moss Landing, CA 95039
 PH: (831) 775-1700

194jahaWeakLink
 Weak Link for Polypro cord

SIZE B DWG. NO. 194jaha.DWG REV.

SCALE 1:2 CAD FILE: tornado/chem/SWfiles SHEET 1 OF 1