

Presence-only Session

Presence-only Session

Distribution data

- **With** information on search effort
 - Visual surveys
- **Without** information on search effort
 - Historic sightings
 - Whaling data
 - Whale watching data

Presence-only Session

Distribution data


- **With** information on search effort
 - Visual surveys
- **Without** information on search effort
 - Historic sightings
 - Whaling data
 - Whale watching data

} Presence-only modeling techniques

Presence-only Session

Whale watching data

Study area



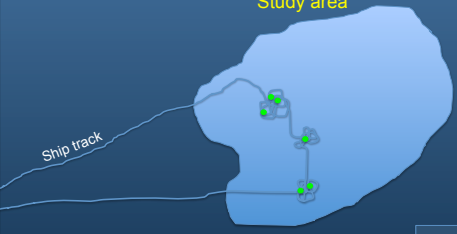
• Visual sighting

Presence-only Session

Whale watching data

Study area

Ship track



• Visual sighting

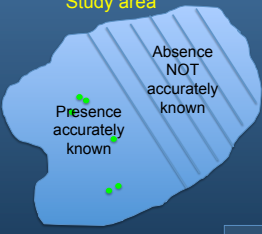
Presence-only Session

Whale watching data

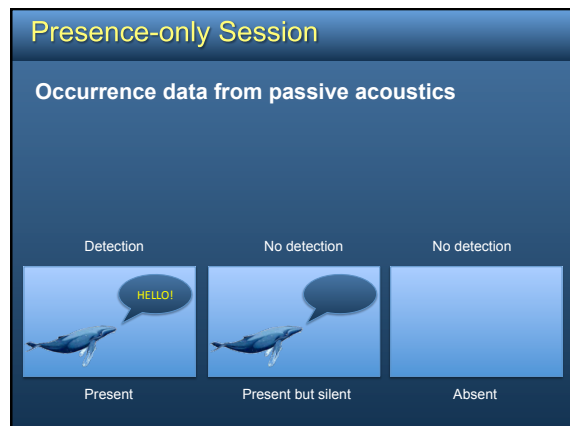
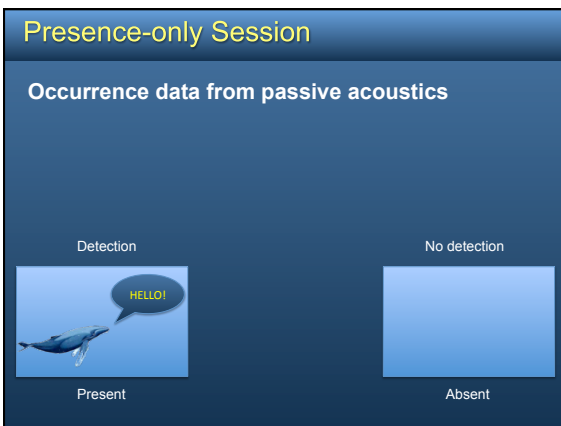
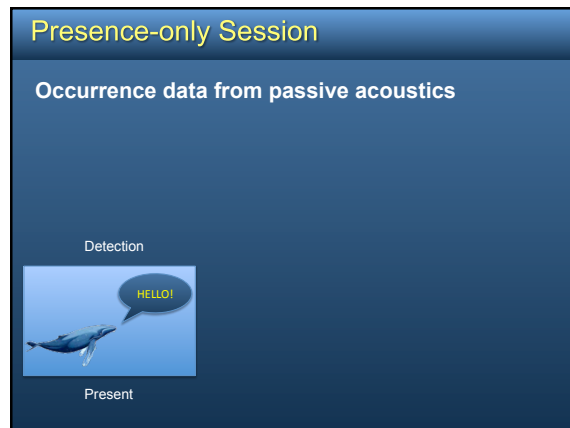
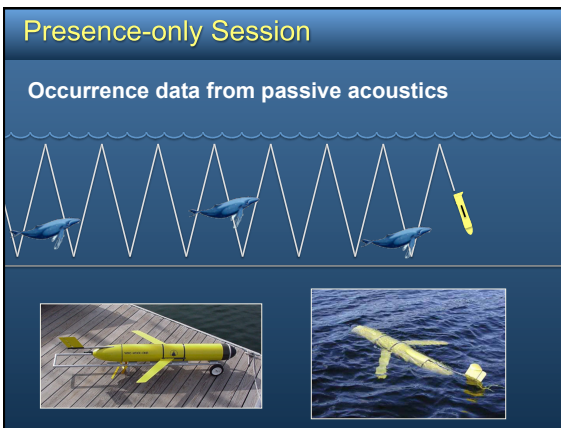
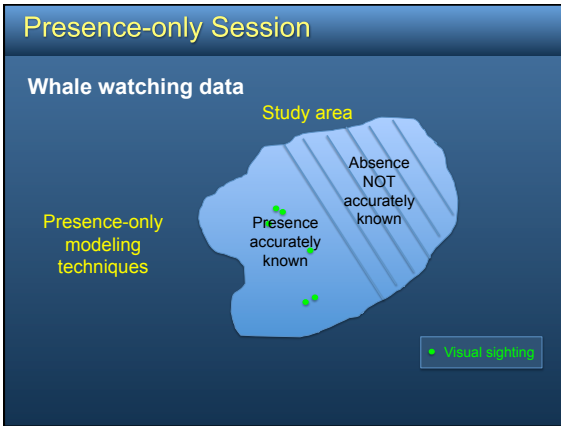
Study area

Presence accurately known

Absence NOT accurately known

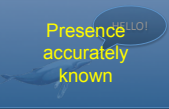

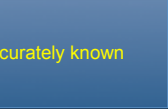


• Visual sighting



Presence-only Session

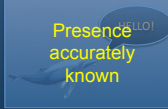

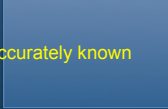
Occurrence data from passive acoustics

Detection	No detection	No detection
 <p>Presence accurately known</p>	 <p>Absence NOT accurately known</p>	 <p>Absence NOT accurately known</p>
Present	Present but silent	Absent

Presence-only Session

Occurrence data from passive acoustics

Presence-only modeling techniques

Detection	No detection	No detection
 <p>Presence accurately known</p>	 <p>Absence NOT accurately known</p>	 <p>Absence NOT accurately known</p>
Present	Present but silent	Absent

Presence-only Session

Building delphinid habitat models with passive acoustic monitoring data
 Melissa Soldevilla (Duke University, USA)

Species distribution modeling in the marine environment: opportunities and dangers
 Derek Tittensor (Dalhousie University, Canada)

Presence-only Session

Melissa Soldevilla
 PhD, Biological Oceanography, 2008
 Scripps Institution of Oceanography, La Jolla, USA
 Currently a postdoctoral associate at Duke University

Interests
 Using passive acoustic monitoring to examine abundance, distribution, and habitat preferences of toothed whales




Presence-only Session

Derek Tittensor
 PhD, Biology, 2007
 Dalhousie University, Halifax, Canada
 Currently a postdoctoral fellow at Dalhousie University

Interests
 Human impacts on biodiversity in the oceans, the effects of sampling and scale, and the distribution and biogeography of marine species

